

## Hi Temp Stability - Injection on Aeris WIDEPORÉ after 1050 cycles

**Column:** Aeris™ 3.6 µm WIDEPORÉ XB-C18 200 Å, LC Column 50 x 2.1 mm, Ea

**Dimensions:** 50 x 2.1 mm ID

**Order No:** 00B-4482-AN

**Elution Type:** Gradient

**Eluent A:** Water with 0.1% TFA

**Eluent B:** Acetonitrile with 0.1% TFA

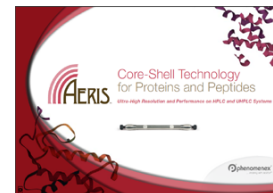
Gradient Profile:	Step No.	Time (min)	Pct A	Pct B
	1	0	97	3
	2	3	97	3
	3	23	35	65

**Flow Rate:** 0.312 mL/min

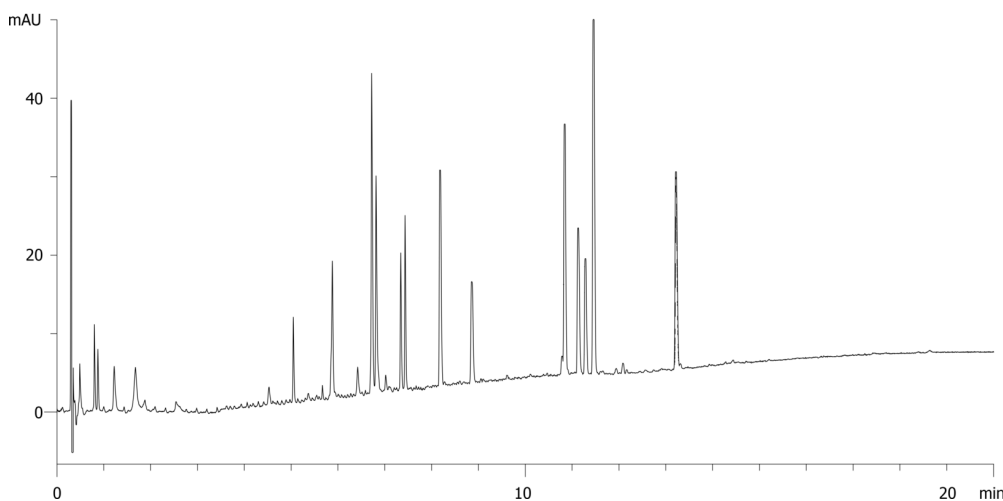
**Col. Temp.:** 90 °C

**Detection:** UV-Vis Abs.-Diode Array (PDA) @ (ambient)

**Analyst Note:** Test was run on a 50x4.6 Aeris WIDEPORÉ 3.6u XB-C18 run at 1.5 mL/min which is not commercially available at this time. Application was modified to reflect the use of a 2.1 mm column for those that wish to replicate the data.  
AppID 19833



Products used in this application:



### ANALYTES:

- 1 Apomyoglobin

