

# HPLC Application

ID No.: 19866

## beta-Casein Trypsin Digest-Aeris PEPTIDE XB-C18 3.6 $\mu$ 150x4.6mm

**Column:** Aeris<sup>TM</sup> 3.6  $\mu$ m PEPTIDE XB-C18 100  $\text{\AA}$ , LC Column 150 x 4.6 mm, Ea

**Dimensions:** 150 x 4.6 mm ID

**Order No:** 00F-4507-E0

**Elution Type:** Gradient

**Eluent A:** 0.1%TFA in Water

**Eluent B:** 0.1%TFA in ACN

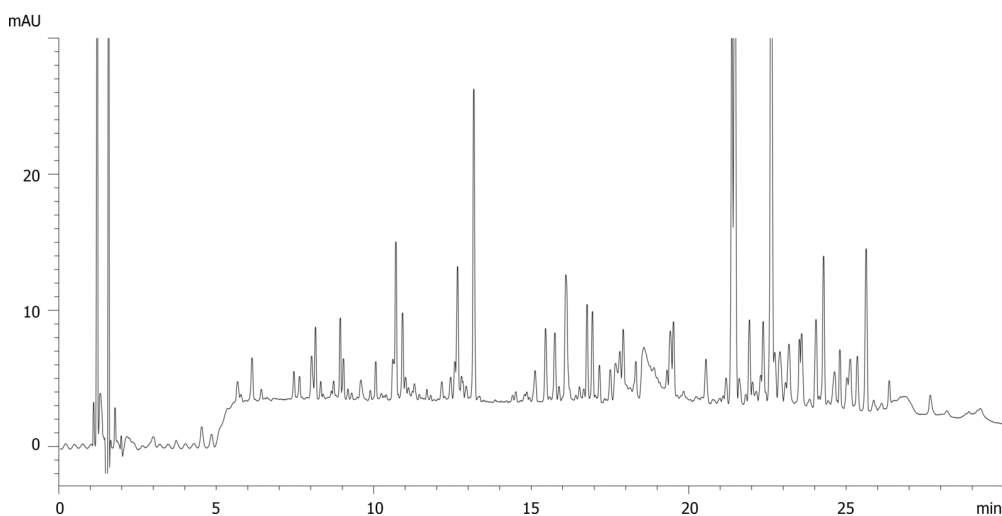
<b>Gradient Profile:</b>	<b>Step No.</b>	<b>Time (min)</b>	<b>Pct A</b>	<b>Pct B</b>
	<b>1</b>	0	97	3
	<b>2</b>	3	97	3
	<b>3</b>	33	50	50
	<b>4</b>	35	5	95

**Flow Rate:** 1.2 mL/min

**Col. Temp.:** 40  $^{\circ}$ C

**Detection:** UV-Vis Abs.-Variable Wave.(UV) @ 214 nm (ambient)

19866



### ANALYTES:

- 1 alpha-Casein



Products used in this application:

