

HPLC Application

ID No.: 19879

BSA Digest (FULL VIEW)-Formic-Aeris PEPTIDE 3.6u XB-C18 150x4.6mm

Column: Aeris[™] 3.6 μ m PEPTIDE XB-C18 100 \AA , LC Column 150 x 4.6 mm, Ea

Dimensions: 150 x 4.6 mm ID

Order No: 00F-4507-E0

Elution Type: Gradient

Eluent A: 0.1%FA in Water

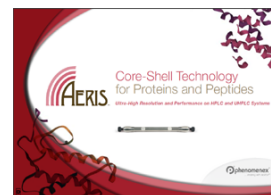
Eluent B: 0.1%FA in ACN

Gradient Profile:	Step No.	Time (min)	Pct A	Pct B
	1	0	97	3
	2	3	97	3
	3	33	35	65

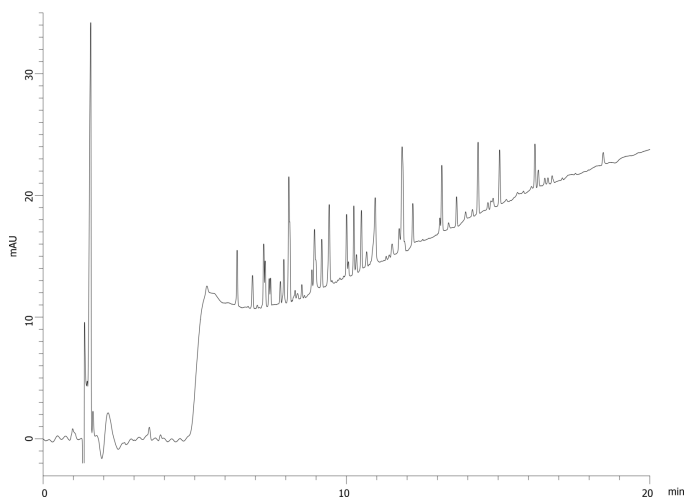
Flow Rate: 1.2 mL/min

Col. Temp.: 40 $^{\circ}$ C

Detection: UV-Vis Abs.-Variable Wave.(UV) @ 214 nm (ambient)
19879



Products used in this application:



ANALYTES:

- 1 Bovine Serum Albumin (BSA)

