

HPLC Application

ID No.: 19881

BSA Digest (FULL VIEW)-Formic-Aeris PEPTIDE 3.6u XB-C18 3.6μ 250x4.6mm

Column: Aeris[™] 3.6 μm PEPTIDE XB-C18 100 Å, LC Column 250 x 4.6 mm, Ea

Dimensions: 250 x 4.6 mm ID

Order No: 00G-4507-E0

Elution Type: Gradient

Eluent A: 0.1%FA in Water

Eluent B: 0.1%FA in ACN

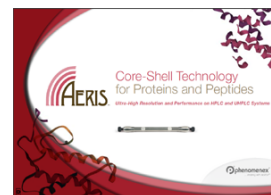
Gradient Profile:	Step No.	Time (min)	Pct A	Pct B
	1	0	97	3
	2	5	97	3
	3	55	35	65

Flow Rate: 1.2 mL/min

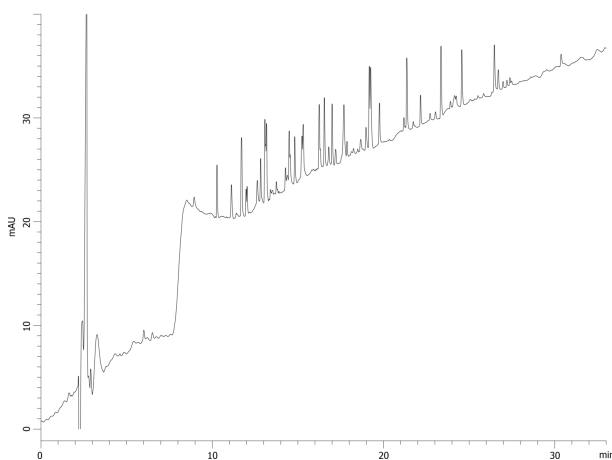
Col. Temp.: 40 °C

Detection: UV-Vis Abs.-Variable Wave.(UV) @ 214 nm (ambient)

19881



Products used in this application:



ANALYTES:

- 1 Bovine Serum Albumin (BSA)

