

# HPLC Application

ID No.: 19882

## BSA Digest (ENLARGED)-Formic-Aeris PEPTIDE 3.6u XB-C18 250x4.6mm

**Column:** Aeris™ 3.6 μm PEPTIDE XB-C18 100 Å, LC Column 250 x 4.6 mm, Ea

**Dimensions:** 250 x 4.6 mm ID

**Order No:** 00G-4507-E0

**Elution Type:** Gradient

**Eluent A:** 0.1%FA in Water

**Eluent B:** 0.1%FA in ACN

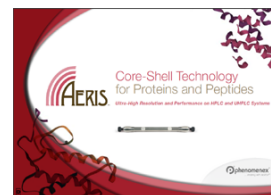
Gradient Profile:	Step No.	Time (min)	Pct A	Pct B
	1	0	97	3
	2	5	97	3
	3	55	35	65

**Flow Rate:** 1.2 mL/min

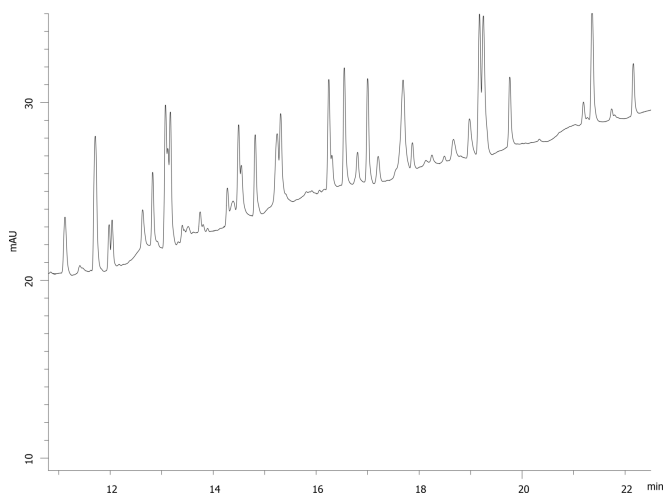
**Col. Temp.:** 40 °C

**Detection:** UV-Vis Abs.-Variable Wave.(UV) @ 214 nm (ambient)

19882



Products used in this application:



### ANALYTES:

- 1 Bovine Serum Albumin (BSA)

