

HPLC Application

ID No.: 19901

Opiates (#2) using Kinetex 2.6u Phenyl-Hexyl 50x2.1mm

Column: Kinetex® 2.6 µm Phenyl-Hexyl 100 Å, LC Column 50 x 2.1 mm, Ea

Dimensions: 50 x 2.1 mm ID

Order No: 00B-4495-AN

Elution Type: Gradient

Eluent A: 10mM ammonium formate

Eluent B: 50/50 Methanol/Acetonitrile

Gradient Profile:	Step No.	Time (min)	Pct A	Pct B
	1	0	95	5
	2	5	5	95

Flow Rate: 0.5 mL/min

Col. Temp.: ambient

Detection: Mass Spectrometer (MS) @ amu (ambient)

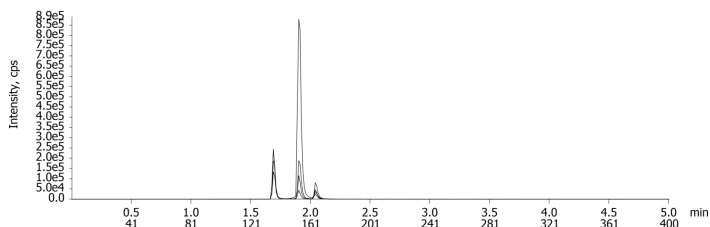
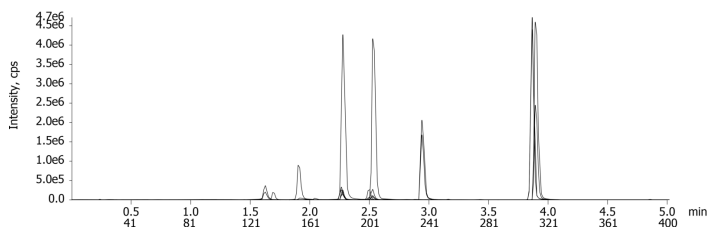
Detector Info:

19901

SCIE



Products used in this application:



ANALYTES:

- 1 Opiates

