

HPLC Application

ID No.: 19903

Phthalate Esters using Kinetex 2.6u Phenyl-Hexyl

Column: Kinetex® 2.6 µm Phenyl-Hexyl 100 Å, LC Column 50 x 2.1 mm, Ea

Dimensions: 50 x 2.1 mm ID

Order No: 00B-4495-AN

Elution Type: Gradient

Eluent A: Water with 0.1% Formic acid

Eluent B: 50/50 Acetonitrile/Methanol

| Gradient Profile: | Step No. | Time (min) | Pct A | Pct B |
|-------------------|----------|------------|-------|-------|
| | 1 | 0 | 65 | 35 |
| | 2 | 15 | 10 | 90 |

Flow Rate: 0.5 mL/min

Col. Temp.: ambient

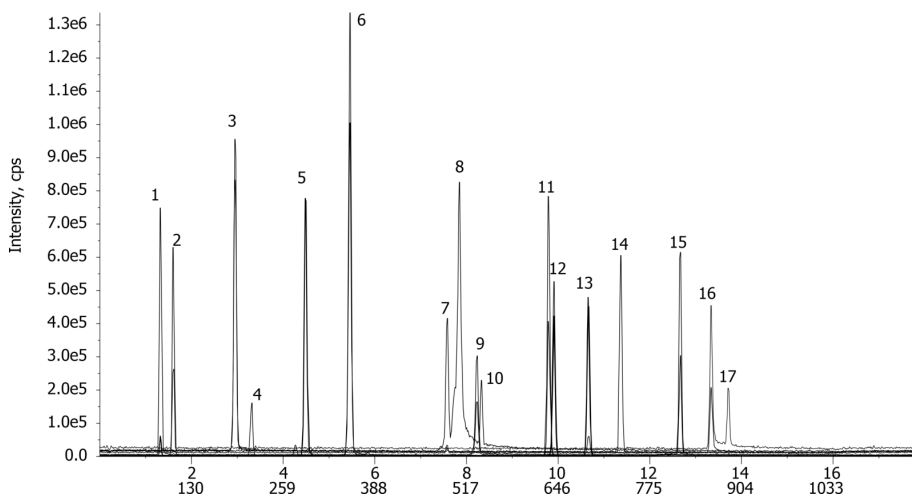
Detection: Mass Spectrometer (MS) @ amu (ambient)

Detector Info: <a target="_blank"

href="https://sciex.com/products/mass-spectrometers?utm_campaign=2019%20application%20search&utm_source=phenomenex&utm_medium=referral">SCIE<



Products used in this application:



Phthalate Esters using Kinetex 2.6u Phenyl-Hexyl

ANALYTES:

- 1** Dimethyl phthalate
- 2** bis(2-Methoxyethyl)phthalate
- 3** Diethyl phthalate
- 4** bis(2-Ethoxyethyl)phthalate
- 5** Diallyl phthalate
- 6** Di-n-propyl phthalate
- 7** Diisobutyl phthalate
- 8** Di-n-butyl phthalate
- 9** bis(2-n-Butoxyethyl)phthalate
- 10** Dibenzylbutyl phthalate
- 11** Dipentyl phthalate
- 12** Dicyclohexyl phthalate
- 13** Di-4-methyl-2-pentyl phthalate
- 14** Dihexyl phthalate
- 15** Diheptyl phthalate
- 16** bis(2-Ethylhexyl)phthalate
- 17** Di-n-octyl phthalate

