

HPLC Application

ID No.: 19911

Pharmaceutical Drug Mix on Kinetex 2.6 μm C18 50 x 2.1mm @ 0.8 mL/min(Quotient Data)

Column: Kinetex® 2.6 μm C18 100 Å, LC Column 50 x 2.1 mm, Ea

Dimensions: 50 x 2.1 mm ID

Order No: 00B-4462-AN

Elution Type: Gradient

Eluent A: 0.1% formic acid in acetonitrile

Eluent B: 0.1% formic acid

Gradient Profile:	Step No.	Time (min)	Pct A	Pct B
	1	0	5	95
	2	0.25	5	95
	3	1.8	90	10
	4	1.9	90	10
	5	1.91	5	95
	6	2.5	5	95

Flow Rate: 0.8 mL/min

Col. Temp.: ambient

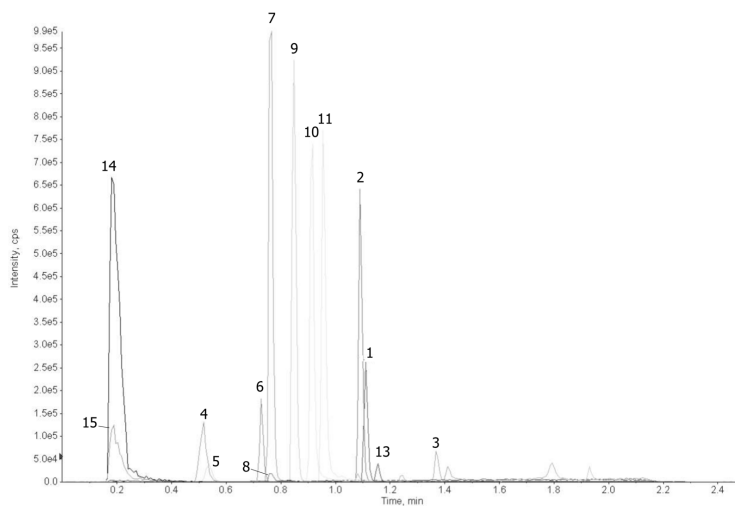
Detection: Mass Spectrometer (MS) @ amu (ambient)



Products used in this application:



19911



Pharmaceutical Drug Mix on Kinetex 2.6 μ m C18 50 x 2.1mm @ 0.8 mL/min(Quotient Data)

ANALYTES:

- 1 Haloperidol
- 2 Diltiazem
- 3 Terfenadine
- 4 Cimetidine
- 5 Acetaminophen
- 6 Sulfathiazole
- 7 Pindolol
- 8 Quinidine
- 9 Acebutolol
- 10 Chlorpheniramine
- 11 Triprolidine
- 12 Prednisolone
- 13 Nortriptyline
- 14 2-Hydroxy-5-methylbenzaldehyde
- 15 Hexanophenone

