

# HPLC Application

ID No.: 19925

## Comparison: Aeris WIDEPORE 3.6u XB-C18 150x4.6 vs. PEPTIDE 3.6u XB-C18 for alpha1acid glycoprotein

**Column:** Aeris™ 3.6 µm WIDEPORE XB-C18 200 Å, LC Column 150 x 4.6 mm, Ea

**Dimensions:** 150 x 4.6 mm ID

**Order No:** 00F-4482-E0

**Elution Type:** Gradient

**Eluent A:** Water with 0.1% TFA

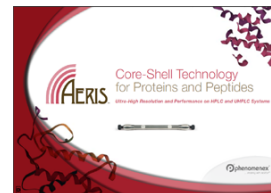
**Eluent B:** Acetonitrile with 0.1% TFA

Gradient Profile:	Step No.	Time (min)	Pct A	Pct B
	1	0	97	3
	2	3	97	3
	3	33	35	65

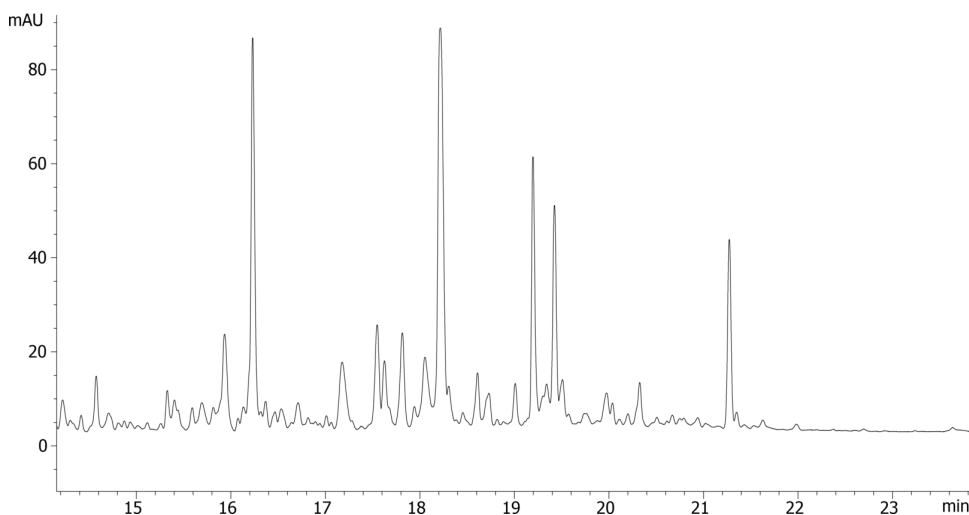
**Flow Rate:** 1.5 mL/min

**Col. Temp.:** 40 °C

**Detection:** UV-Vis Abs.-Diode Array (PDA) @ 214 nm (ambient)  
19925



Products used in this application:



### ANALYTES:

- 1 alpha-1-Acid Glycoprotein

