

HPLC Application

ID No.: 19927

Lab Productivity Comparison Aeris PEPTIDE 3.6u XB-C18 150x4.6mm for Hu Ig-G

Column: Aeris[™] 3.6 µm PEPTIDE XB-C18 100 Å, LC Column 150 x 4.6 mm, Ea

Dimensions: 150 x 4.6 mm ID

Order No: 00F-4507-E0

Elution Type: Gradient

Eluent A: Water with 0.1% TFA

Eluent B: Acetonitrile with 0.1% TFA

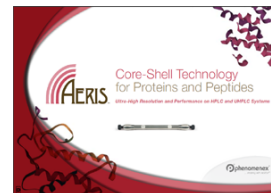
Gradient Profile:	Step No.	Time (min)	Pct A	Pct B
	1	0	97	3
	2	5	97	3
	3	59	55	45

Flow Rate: 1.5 mL/min

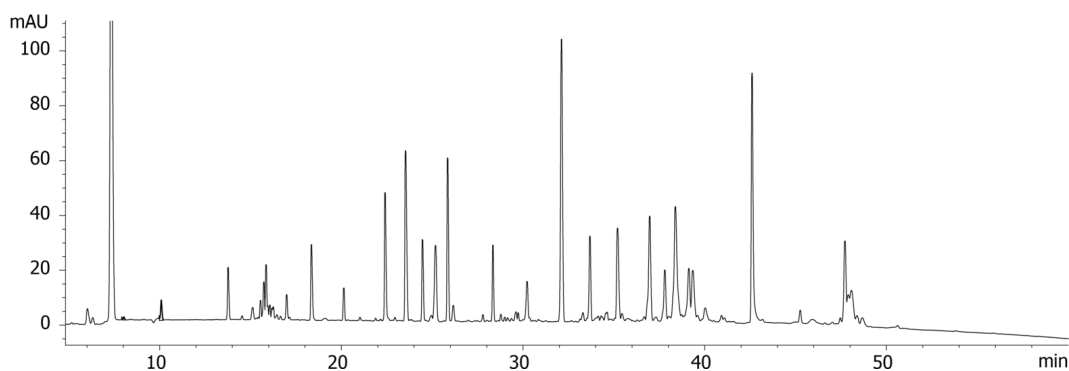
Col. Temp.: 40 °C

Detection: UV-Vis Abs.-Diode Array (PDA) @ 214 nm (ambient)

19927



Products used in this application:



ANALYTES:

- 1 Human IgG

