

HPLC Application

ID No.: 19929

Comparison: WIDEPORÉ XB-C18 vs Aeris PEPTIDE 3.6u XB-C18 150x4.6 with alpha1acid glycoprotein

Column: Aeris™ 3.6 µm PEPTIDE XB-C18 100 Å, LC Column 150 x 4.6 mm, Ea

Dimensions: 150 x 4.6 mm ID

Order No: 00F-4507-E0

Elution Type: Gradient

Eluent A: Water with 0.1% TFA

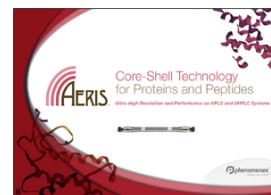
Eluent B: Acetonitrile with 0.1% TFA

Gradient Profile:	Step No.	Time (min)	Pct A	Pct B
	1	0	97	3
	2	3	97	3
	3	33	35	65

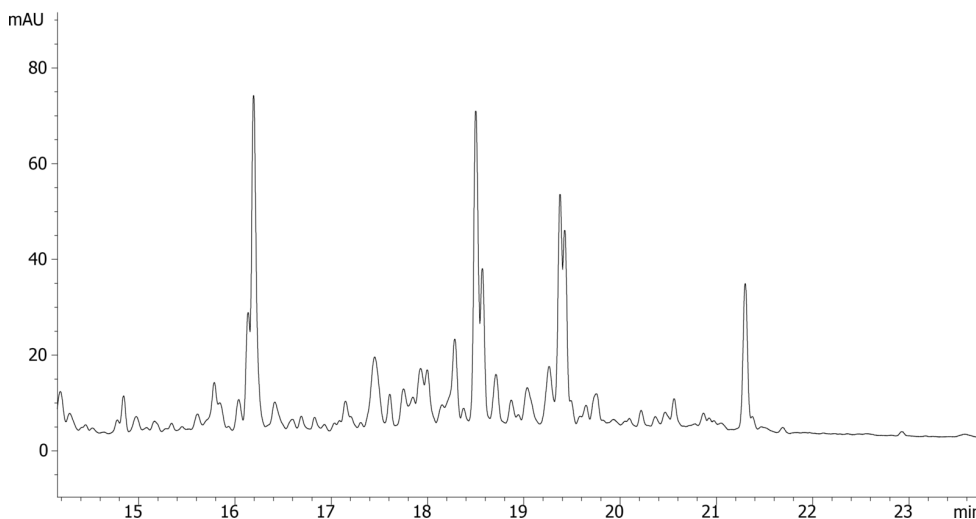
Flow Rate: 1.5 mL/min

Col. Temp.: 40 °C

Detection: UV-Vis Abs.-Diode Array (PDA) @ 214 nm (ambient)
19929



Products used in this application:



ANALYTES:

- 1 alpha-1-Acid Glycoprotein

