

## Deamidation of Myoglobin Tryptic Map Aeris PEPTIDE 3.6u

**Column:** Aeris™ 3.6 µm PEPTIDE XB-C18 100 Å, LC Column 150 x 4.6 mm, Ea

**Dimensions:** 150 x 4.6 mm ID

**Order No:** 00F-4507-E0

**Elution Type:** Gradient

**Eluent A:** Water with 0.1% TFA

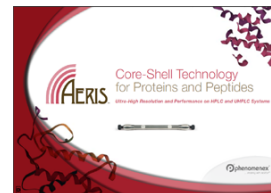
**Eluent B:** Acetonitrile with 0.1% TFA

Gradient Profile:	Step No.	Time (min)	Pct A	Pct B
	1	0	97	3
	2	5	97	3
	3	55	55	45

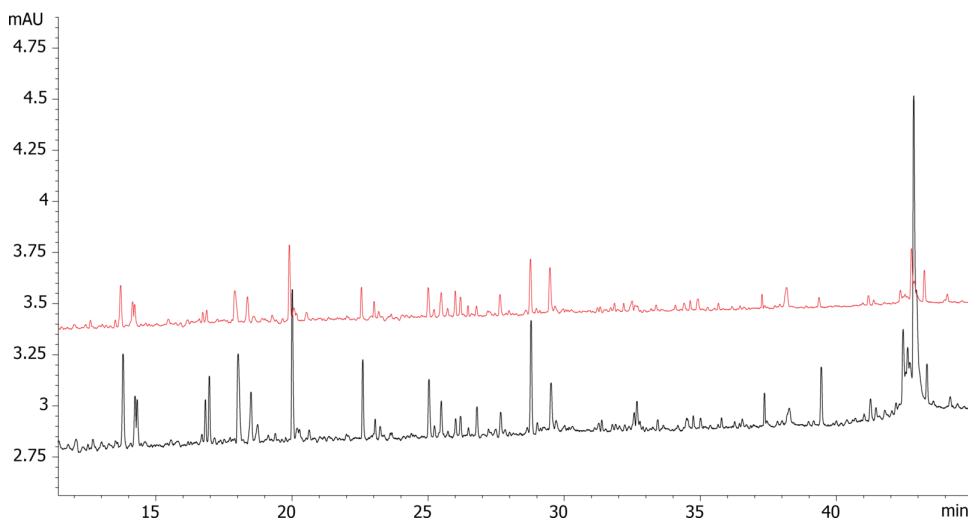
**Flow Rate:** 1.2 mL/min

**Col. Temp.:** 40 °C

**Detection:** UV-Vis Abs.-Variable Wave.(UV) @ 214 nm (ambient)  
19937



Products used in this application:



### ANALYTES:

1 Myoglobin

