

# HPLC Application

ID No.: 19939

## Pharmaceutical Drug Mix on Kinetex C18 2.6u 75 x 2.1mm @ 1.1 mL/min(Quotient Data)

**Column:** Kinetex<sup>®</sup> 2.6  $\mu$ m C18 100 Å, LC Column 75 x 2.1 mm, Ea

**Dimensions:** 75 x 2.1 mm ID

**Order No:** 00C-4462-AN

**Elution Type:** Gradient

**Eluent A:** 0.1% formic acid in acetonitrile

**Eluent B:** 0.1% formic acid

Gradient Profile:	Step No.	Time (min)	Pct A	Pct B
	1	0	5	95
	2	0.25	5	95
	3	1.8	90	10
	4	1.9	90	10
	5	1.91	5	95
	6	2.5	5	95

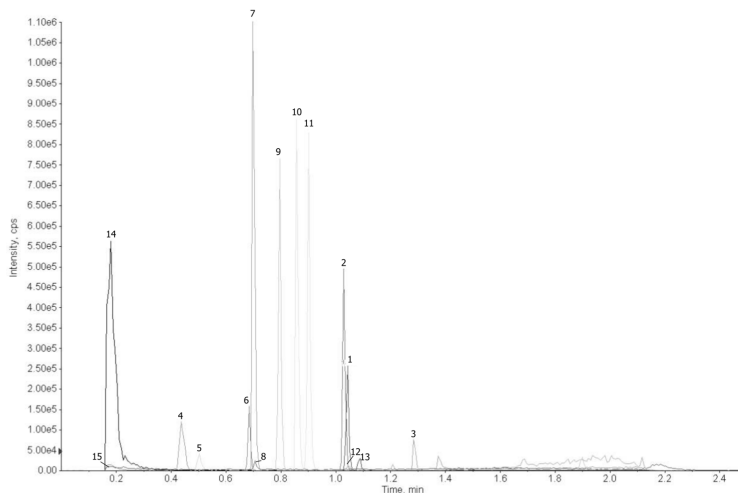
**Flow Rate:** 1.1 mL/min

**Col. Temp.:** ambient

**Detection:** Mass Spectrometer (MS) @ amu (ambient)



Products used in this application:



## Pharmaceutical Drug Mix on Kinetex C18 2.6u 75 x 2.1mm @ 1.1 mL/min(Quotient Data)

### ANALYTES:

- 1 Haloperidol
- 2 Diltiazem
- 3 Terfenadine
- 4 Cimetidine
- 5 Acetaminophen
- 6 Sulfathiazole
- 7 Pindolol
- 8 Quinidine
- 9 Acebutolol
- 10 Chlorpheniramine
- 11 Triprolidine
- 12 Prednisolone
- 13 Nortriptyline
- 14 2-Hydroxy-5-methylbenzaldehyde
- 15 Hexanophenone

