

HPLC Application

ID No.: 19940

Pharmaceutical Drug Mix on Kinetex C18 2.6µ 100 x 2.1mm @ 0.85 mL/min(Quotient Data)

Column: Kinetex[®] 2.6 µm C18 100 Å, LC Column 100 x 2.1 mm, Ea

Dimensions: 100 x 2.1 mm ID

Order No: 00D-4462-AN

Elution Type: Gradient

Eluent A: 0.1% formic acid in acetonitrile

Eluent B: 0.1% formic acid

Gradient Profile:	Step No.	Time (min)	Pct A	Pct B
	1	0	5	95
	2	0.25	5	95
	3	1.8	90	10
	4	1.9	90	10
	5	1.91	5	95
	6	2.5	5	95

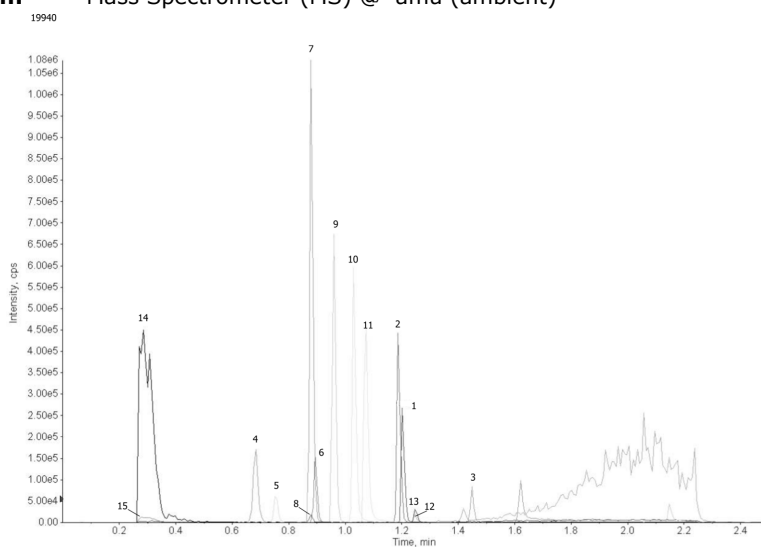
Flow Rate: 0.85 mL/min

Col. Temp.: ambient

Detection: Mass Spectrometer (MS) @ amu (ambient)



Products used in this application:



Pharmaceutical Drug Mix on Kinetex C18 2.6u 100 x 2.1mm @ 0.85 mL/min(Quotient Data)

ANALYTES:

- 1 Haloperidol
- 2 Diltiazem
- 3 Terfenadine
- 4 Cimetidine
- 5 Acetaminophen
- 6 Sulfathiazole
- 7 Pindolol
- 8 Quinidine
- 9 Acebutolol
- 10 Chlorpheniramine
- 11 Triprolidine
- 12 Prednisolone
- 13 Nortriptyline
- 14 2-Hydroxy-5-methylbenzaldehyde
- 15 Hexanophenone

