

HPLC Application

ID No.: 19945

Pharmaceutical Drug Mix on Kinetex 2.6 µm C18 50 x 2.1mm @ 0.8 mL/min(Quotient Data)

Column: Kinetex® 2.6 µm C18 100 Å, LC Column 50 x 2.1 mm, Ea

Dimensions: 50 x 2.1 mm ID

Order No: 00B-4462-AN

Elution Type: Gradient

Eluent A: 0.1% formic acid in acetonitrile

Eluent B: 0.1% formic acid

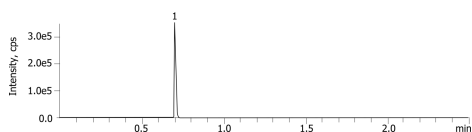
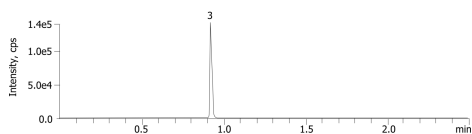
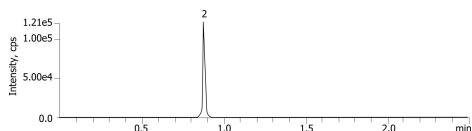
Gradient Profile:	Step No.	Time (min)	Pct A	Pct B
	1	0	5	95
	2	0.25	5	95
	3	1.8	90	10
	4	1.9	90	10
	5	1.91	5	95
	6	2.5	5	95

Flow Rate: 0.8 mL/min

Col. Temp.: ambient

Detection: Mass Spectrometer (MS) @ amu (ambient)

19945



ANALYTES:

- 1** Sulfathiazole
Retention Time: 0.707 min
- 2** Chlorpheniramine
Retention Time: 0.883 min
- 3** Triprolidine
Retention Time: 0.924 min



Products used in this application:

