

HPLC Application

ID No.: 19952

Green Tea extracts/catechins on Kinetex 2.6u XB-C18 100x4.60mm on Shimadzu Nexera

Column: Kinetex® 2.6 µm XB-C18 100 Å, LC Column 100 x 4.6 mm, Ea

Dimensions: 100 x 4.6 mm ID

Order No: 00D-4496-E0

Elution Type: Gradient

Eluent A: 0.1% Phosphoric Acid in Water

Eluent B: 0.1% Phosphoric Acid in Acetonitrile

Gradient Profile:	Step No.	Time (min)	Pct A	Pct B
	1	0.01	85	15
	2	0.45	85	15
	3	2.68	65	35
	4	3.34	10	90
	5	3.35	85	15
	6	5.34	85	15

Flow Rate: 1.8 mL/min

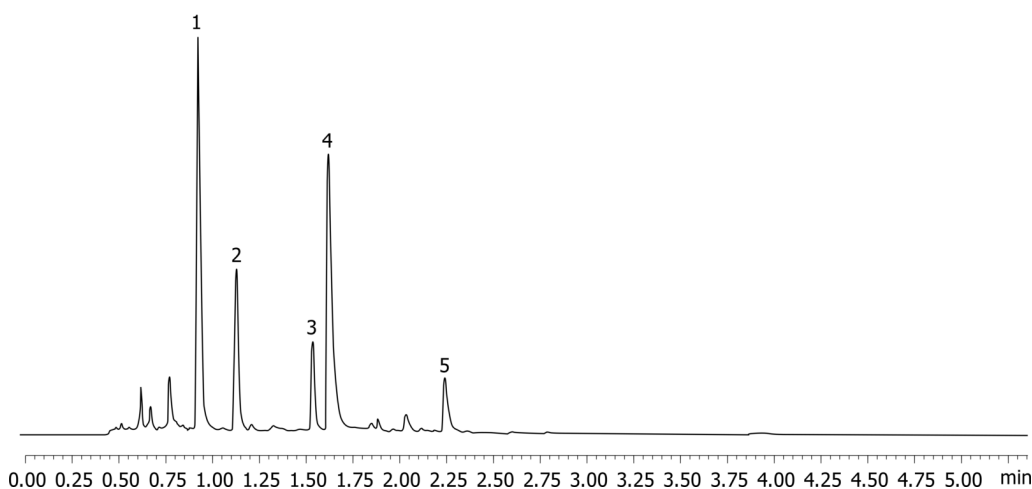
Col. Temp.: ambient

Detection: UV-Vis Abs.-Variable Wave.(UV) @ 215 nm (ambient)

19952



Products used in this application:



ANALYTES:

- 1** Epigallocatechin
Retention Time: 0.925 min
- 2** Catechin
Retention Time: 1.128 min
- 3** Epicatechin
Retention Time: 1.535 min
- 4** Epigallocatechin gallate
Retention Time: 1.619 min
- 5** Epicatechin gallate
Retention Time: 2.242 min

