

Soft Drink Additives (Coke Zero) on Kinetex 1.7u C18 100x2.10mm on Shimadzu Nexera

Column: Kinetex® 1.7 µm C18 100 Å, LC Column 100 x 2.1 mm, Ea

Dimensions: 100 x 2.1 mm ID

Order No: 00D-4475-AN

Elution Type: Gradient

Eluent A: 0.1% Phosphoric Acid in Water

Eluent B: 0.1% Phosphoric Acid in Acetonitrile

Gradient Profile:	Step No.	Time (min)	Pct A	Pct B
	1	0.01	95	5
	2	0.68	95	5
	3	2.68	60	40
	4	4.34	60	40
	5	5.01	5	95
	6	5.02	95	5
	7	7.01	95	5

Flow Rate: 0.36 mL/min

Col. Temp.: 30 °C

Detection: UV-Vis Abs.-Variable Wave.(UV) @ 215 nm (ambient)

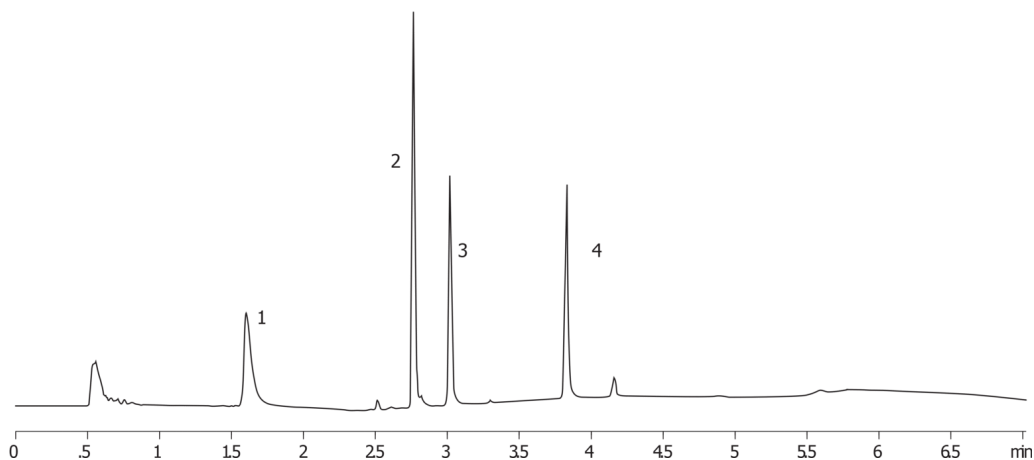
Analyst Note: SecurityGuard™ ULTRA Guard Cartridge System extends column lifetime.

- SecurityGuard ULTRA Cartridges, UHPLC C18 for 4.6mm ID Columns, 3/Pk Part No.: AJ0-8768 - Holder Part No.: AJ0-9000

19954



Products used in this application:



ANALYTES:

- 1** Acesulfame-K
Retention Time: 1.604 min
- 2** Caffeine
Retention Time: 2.765 min
- 3** Aspartame
Retention Time: 3.016 min
- 4** Benzoic acid
Retention Time: 3.829 min

