

HPLC Application

ID No.: 19956

USP Acetaminophen, Acetylsalicylic Acid, Caffeine on Kinetex 2.6u C18 100x4.60mm on Shimadzu Nexera

Column: Kinetex[®] 2.6 μ m C18 100 Å, LC Column 100 x 4.6 mm, Ea

Dimensions: 100 x 4.6 mm ID

Order No: 00D-4462-E0

Elution Type: Isocratic

Eluent A: 69:28:3 Water:Methanol:Acetic Acid

Gradient

Step No.	Time (min)	Pct A
1	12	100

Profile:

Flow Rate: 2 mL/min

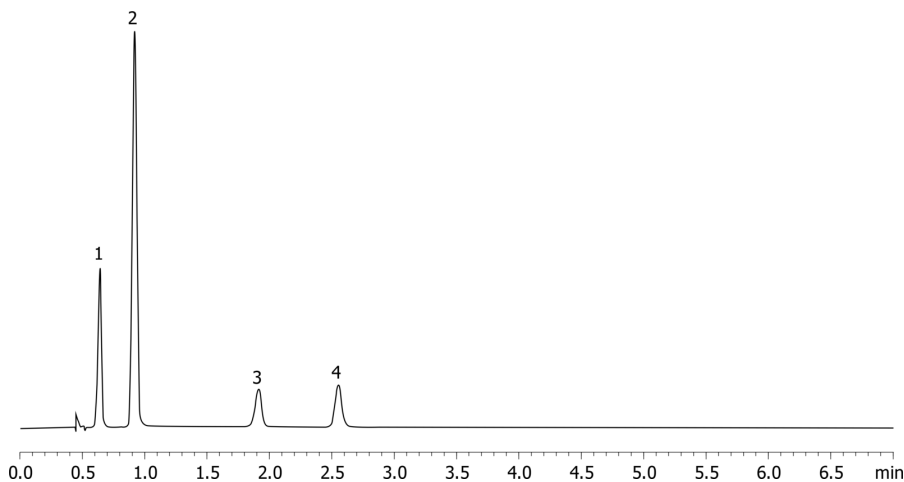
Col. Temp.: ambient

Detection: UV-Vis Abs.-Variable Wave.(UV) @ 275 nm (ambient)

19956



Products used in this application:



ANALYTES:

- 1** Acetaminophen
Retention Time: 0.643 min
- 2** Caffeine
Retention Time: 0.923 min
- 3** Acetylsalicylic acid
Retention Time: 1.915 min
- 4** Benzoic acid
Retention Time: 2.555 min

