

HPLC Application

ID No.: 19961

USP Simvastatin Lovastatin on Kinetex 2.6µm C18 100x2.10mm using Shimadzu Nexera

Column: Kinetex® 2.6 µm C18 100 Å, LC Column 100 x 2.1 mm, Ea

Dimensions: 100 x 2.1 mm ID

Order No: 00D-4462-AN

Elution Type: Isocratic

Eluent A: 32mM Sodium Phosphate pH 4.5

Eluent B: Acetonitrile

Gradient Profile:	Step No.	Time (min)	Pct A	Pct B
	1	5	35	65

Flow Rate: 0.3 mL/min

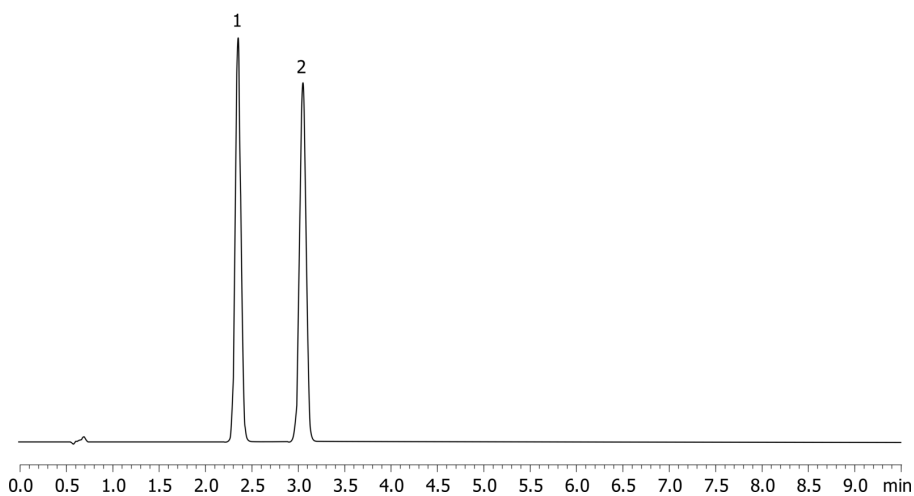
Col. Temp.: ambient

Detection: UV-Vis Abs.-Variable Wave.(UV) @ 238 nm (ambient)

19961



Products used in this application:



ANALYTES:

1 Lovastatin

Retention Time: 2.35 min

2 Simvastatin

Retention Time: 3.051 min

