

HPLC Application

ID No.: 19963

NSAID's in Human Urine using Kinetex 2.6 μ C8 150 x 2.10 mm on Shimadzu Nexera

Column: Kinetex[®] 2.6 μ m C8 100 Å, LC Column 100 x 4.6 mm, Ea

Dimensions: 100 x 4.6 mm ID

Order No: 00D-4497-E0

Elution Type: Gradient

Eluent A: 0.1 Phosphoric Acid in Water

Eluent B: 0.1% Phosphoric Acid in Acetonitrile

Gradient Profile:	Step No.	Time (min)	Pct A	Pct B
	1	0	70	30
	2	4	50	50
	3	7.5	30	70
	4	9	5	95
	5	10	70	30

Flow Rate: 1.5 mL/min

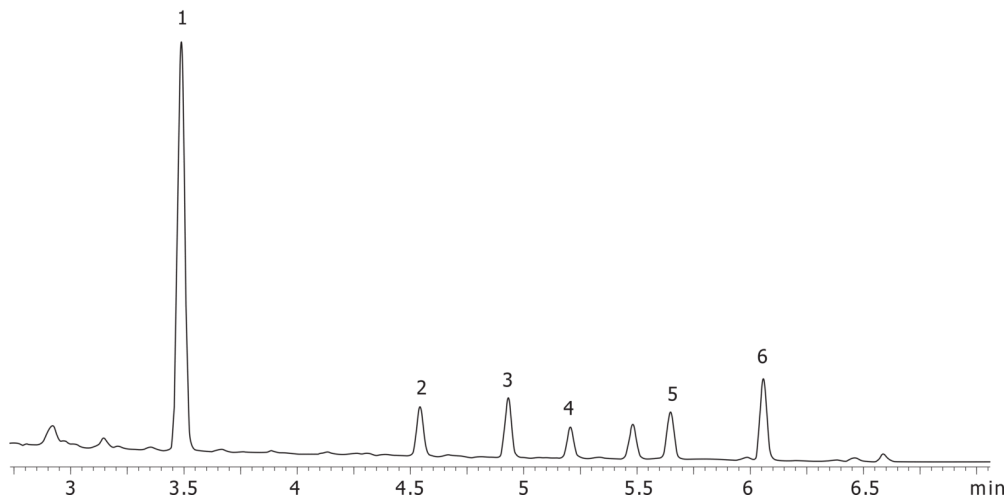
Col. Temp.: ambient

Detection: UV-Vis Abs.-Variable Wave.(UV) @ 230 nm (ambient)

19963



Products used in this application:



ANALYTES:

- 1 Naproxen**
Retention Time: 3.489 min
- 2 Fenoprofen**
Retention Time: 4.542 min
- 3 Ibuprofen**
Retention Time: 4.932 min
- 4 Phenylbutazone**
Retention Time: 5.206 min
- 5 Indomethacin**
Retention Time: 5.649 min
- 6 Meclofenamic acid**
Retention Time: 6.059 min

