

HPLC Application

ID No.: 19965

USP Norethindrone, Progesterone and Mestranol on Kinetex 2.6u C8 150x4.60mm Shimadzu Nexera

Column: Kinetex[®] 2.6 μ m C8 100 \AA , LC Column 150 x 4.6 mm, Ea

Dimensions: 150 x 4.6 mm ID

Order No: 00F-4497-E0

Elution Type: Isocratic

Eluent A: 50:50 Acetonitrile:Water

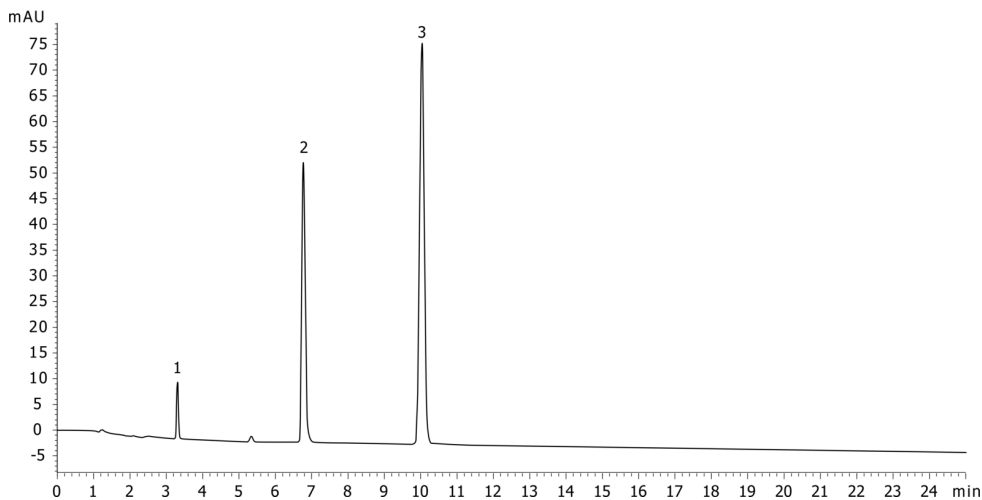
Gradient	Step No.	Time (min)	Pct A
Profile:	1	25	100

Flow Rate: 1 mL/min

Col. Temp.: ambient

Detection: UV-Vis Abs.-Variable Wave.(UV) @ 200 nm (ambient)

19965



ANALYTES:

- 1** Norethindrone
Retention Time: 3.306 min
- 2** Progesterone
Retention Time: 6.775 min
- 3** Mestranol
Retention Time: 10.041 min



Products used in this application:

