

HPLC Application

ID No.: 19966

USP Norethindrone, Progesterone and Mestranol on Kinetex 2.6u C8 100x2.10mm @ 0.20mL/min on Shimadzu

Column: Kinetex[®] 2.6 μm C8 100 Å, LC Column 100 x 2.1 mm, Ea

Dimensions: 100 x 2.1 mm ID

Order No: 00D-4497-AN

Elution Type: Isocratic

Eluent A: 50:50 Acetonitrile:Water

Gradient	Step No.	Time (min)	Pct A
Profile:	1	10	100

Flow Rate: 0.2 mL/min

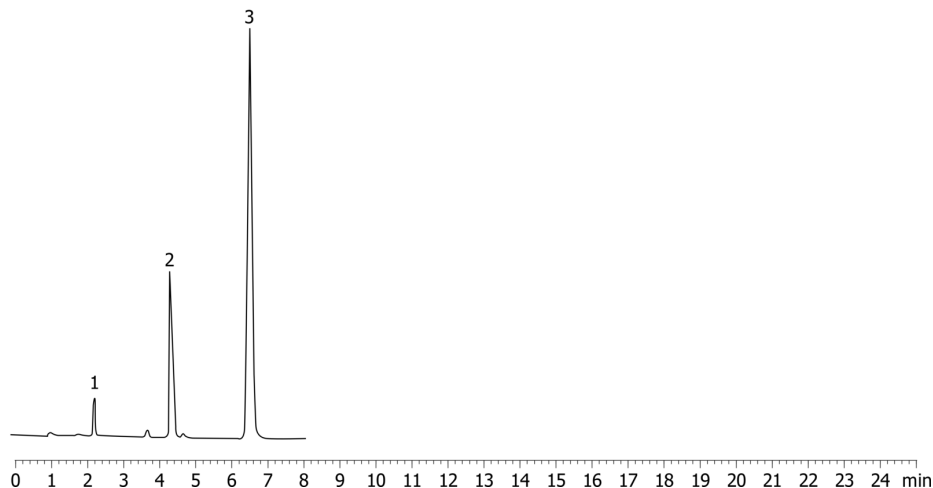
Col. Temp.: ambient

Detection: UV-Vis Abs.-Variable Wave.(UV) @ 200 nm (ambient)

19966



Products used in this application:



ANALYTES:

- 1** Norethindrone
Retention Time: 2.185 min
- 2** Progesterone
Retention Time: 4.33 min
- 3** Mestranol
Retention Time: 6.517 min

