

# HPLC Application

ID No.: 19968

## USP Simvastatin Lovastatin on Kinetex 2.6µm C18 75x4.60mm using Shimadzu Nexera

**Column:** Kinetex® 2.6 µm C18 100 Å, LC Column 75 x 4.6 mm, Ea

**Dimensions:** 75 x 4.6 mm ID

**Order No:** 00C-4462-E0

**Elution Type:** Isocratic

**Eluent A:** 32mM Sodium Phosphate pH 4.5

**Eluent B:** Acetonitrile

Gradient Profile:	Step No.	Time (min)	Pct A	Pct B
	1	10	35	65

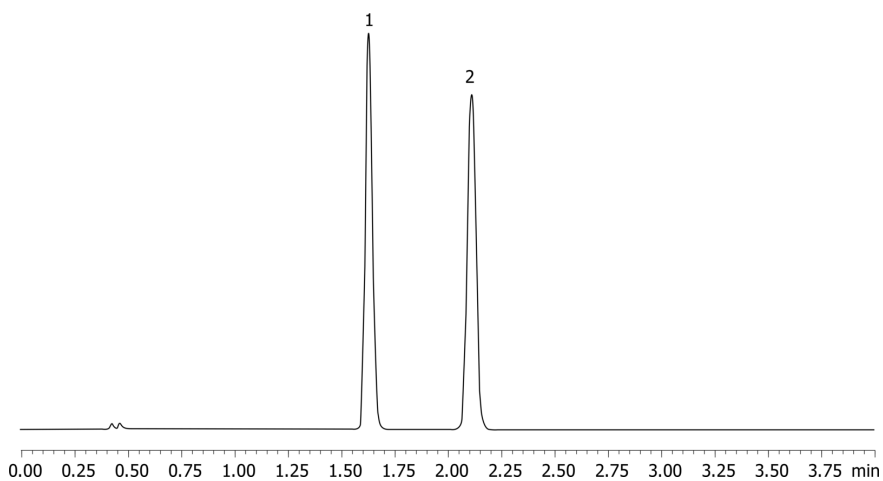
**Flow Rate:** 1.5 mL/min

**Col. Temp.:** ambient

**Detection:** UV-Vis Abs.-Variable Wave.(UV) @ 238 nm (ambient)  
19968



Products used in this application:



### ANALYTES:

1 Lovastatin

Retention Time: 1.626 min

2 Simvastatin

Retention Time: 2.108 min

