

HPLC Application

ID No.: 19969

Green Tea extracts/catechins on Kinetex 2.6u C18 100x2.10mm @0.36mL/min using Shimadzu Nexera

Column: Kinetex® 2.6 µm C18 100 Å, LC Column 100 x 2.1 mm, Ea

Dimensions: 100 x 2.1 mm ID

Order No: 00D-4462-AN

Elution Type: Gradient

Eluent A: 0.1% Phosphoric Acid in Water

Eluent B: 0.1% Phosphoric Acid in Acetonitrile

Gradient Profile:	Step No.	Time (min)	Pct A	Pct B
	1	0.01	85	15
	2	0.45	85	15
	3	2.68	65	35
	4	3.34	10	90
	5	3.35	85	15
	6	5.34	85	15

Flow Rate: 0.36 mL/min

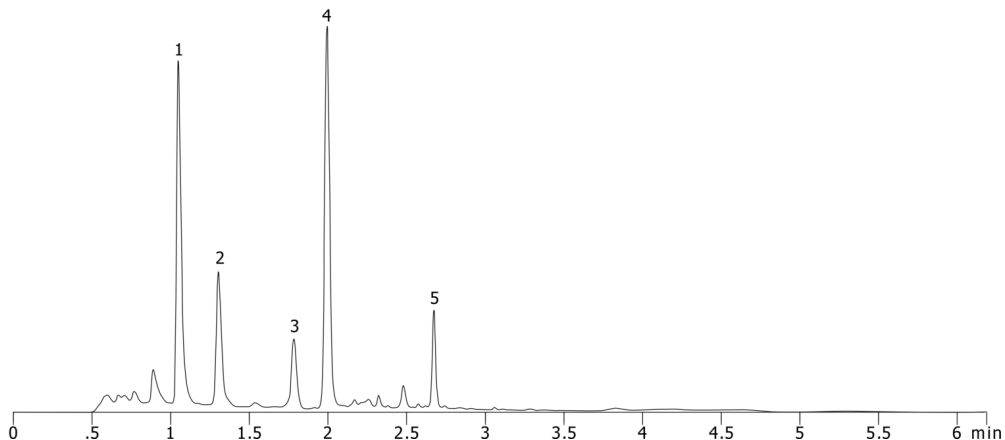
Col. Temp.: ambient

Detection: UV-Vis Abs.-Variable Wave.(UV) @ 215 nm (ambient)

19969



Products used in this application:



ANALYTES:

- 1** Epigallocatechin
Retention Time: 1.047 min
- 2** Catechin
Retention Time: 1.303 min
- 3** Epicatechin
Retention Time: 1.782 min
- 4** Epigallocatechin gallate
Retention Time: 1.993 min
- 5** Epicatechin gallate
Retention Time: 2.673 min

