

# GC Application

ID No.: 19970

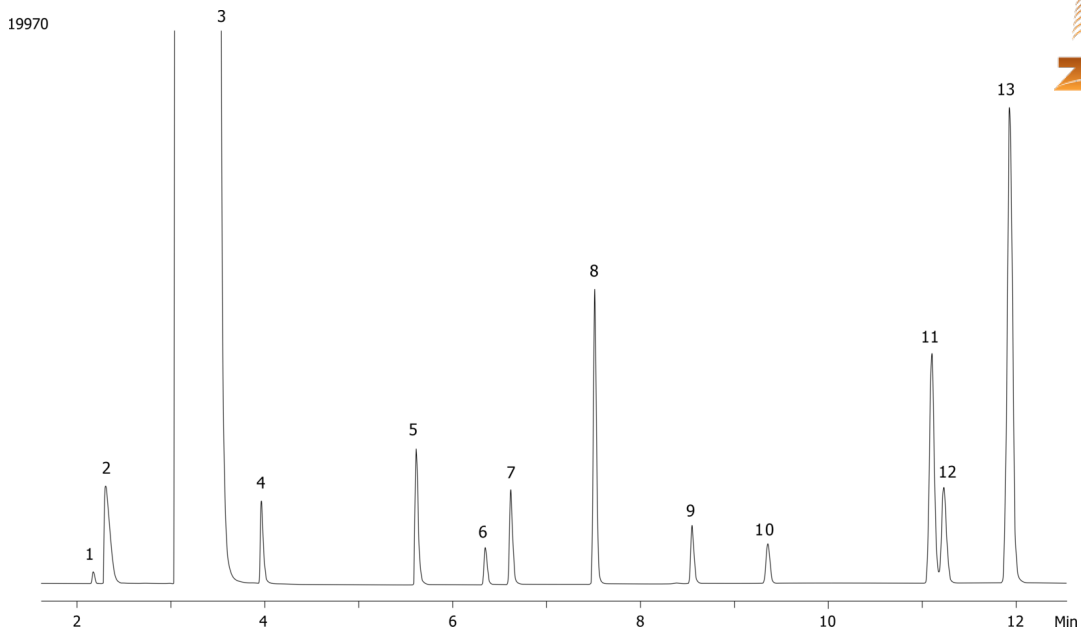
## Bioethanol using ZB-624 30x.25x1.40um

**Column:** Zebron<sup>™</sup> ZB-624, GC Cap. Column 30 m x 0.25 mm x 1.40 µm, Ea  
**Phase:** 6% Cyanopropylphenyl 94% Dimethylpolysiloxane  
**Dimensions:** 30 meters x 0.25 mm x 1.4 µm  
**Order No:** 7HG-G005-27  
**Oven Profile:** 35 °C for 4 min to 70 °C @ 10 °C/min for 5 min to 200 °C @t 25 °C/min for 1 min.

**Carrier Gas:** Constant Flow Helium, 1.6 mL/min  
**Injection:** Split 50:1 2 µL @ 140°C  
**Detection:** Flame Ionization (FID) (200°C)  
**Analyst Note:** Solvent: Ethanol



Products used in this application:



## Bioethanol using ZB-624 30x.25x1.40um

### ANALYTES:

- 1 Acetaldehyde
- 2 Methanol
- 3 Ethanol
- 4 Impurity from Ethanol
- 5 Propanol
- 6 Ethyl acetate
- 7 2-Butanol
- 8 2-Methylpropanol
- 9 Butanol
- 10 Acetal
- 11 3-Methylbutanol
- 12 2-Methylbutanol
- 13 4-Methylpentanol

