

HPLC Application

ID No.: 19971

Soft Drink Additives (Coke Zero) on Kinetex 2.6u C18 100x4.60mm on Shimadzu Nexera

Column: Kinetex[®] 2.6 μ m C18 100 Å, LC Column 100 x 4.6 mm, Ea

Dimensions: 100 x 4.6 mm ID

Order No: 00D-4462-E0

Elution Type: Gradient

Eluent A: 0.1% Phosphoric Acid in Water

Eluent B: 0.1% Phosphoric Acid in Acetonitrile

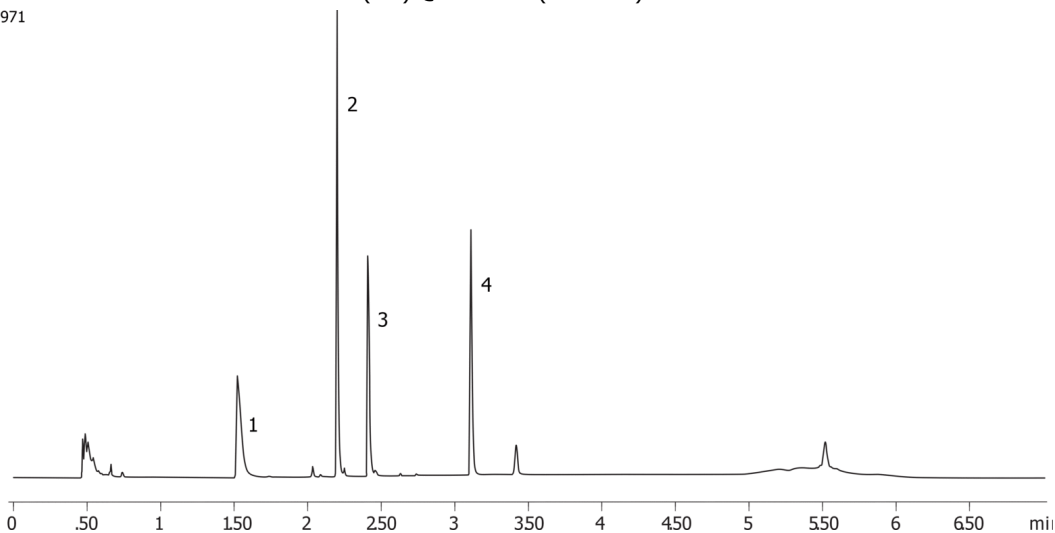
Gradient Profile:	Step No.	Time (min)	Pct A	Pct B
	1	0.01	95	5
	2	0.68	95	5
	3	2.68	60	40
	4	4.34	60	40
	5	5.01	5	95
	6	5.02	95	5
	7	7.01	95	5

Flow Rate: 1.8 mL/min

Col. Temp.: ambient

Detection: UV-Vis Abs.-Variable Wave.(UV) @ 215 nm (ambient)

19971



ANALYTES:

- 1** Acesulfame-K
Retention Time: 1.523 min
- 2** Caffeine
Retention Time: 2.2 min
- 3** Aspartame
Retention Time: 2.408 min
- 4** Benzoic acid
Retention Time: 3.111 min



Products used in this application:

