

# HPLC Application

ID No.: 19988

## Geometric Isomers XB-C18 2.6 $\mu$ 100 $\text{\AA}$

**Column:** Kinetex<sup>®</sup> 2.6  $\mu$ m XB-C18 100  $\text{\AA}$ , LC Column 50 x 4.6 mm, Ea

**Dimensions:** 50 x 4.6 mm ID

**Order No:** 00B-4496-E0

**Elution Type:** Isocratic

**Eluent A:** 20mM Potassium Phosphate pH 2.5

**Eluent B:** Acetonitrile

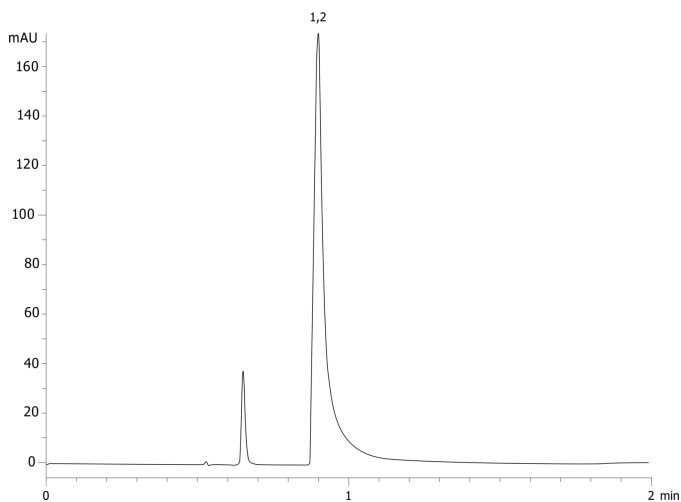
Gradient Profile:	Step No.	Time (min)	Pct A	Pct B
	1	2	97	3

**Flow Rate:** 1 mL/min

**Col. Temp.:** ambient

**Detection:** UV-Vis Abs.-Variable Wave.(UV) @ 210 nm (ambient)

19988



### ANALYTES:

1 Fumaric acid / Maleic acid



Products used in this application:

