

## Substituted Chlorophenols on Kinetex 2.6 $\mu$ C18

**Column:** Kinetex® 2.6  $\mu$ m C18 100 Å, LC Column 50 x 4.6 mm, Ea

**Dimensions:** 50 x 4.6 mm ID

**Order No:** 00B-4462-E0

**Elution Type:** Isocratic

**Eluent A:** Water

**Eluent B:** MeOH

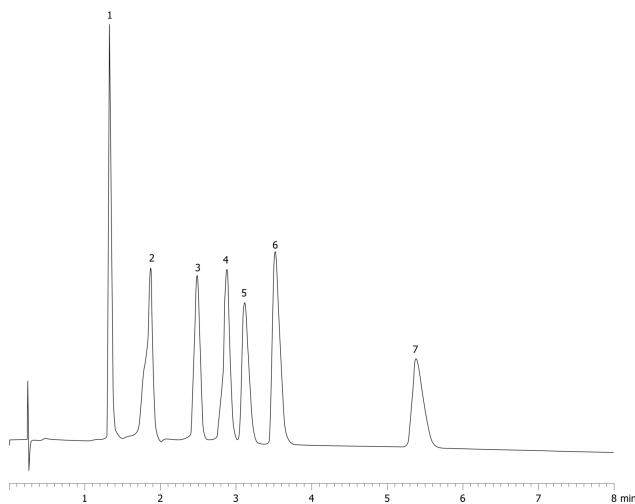
Gradient Profile:	Step No.	Time (min)	Pct A	Pct B
	1	0	55	45

**Flow Rate:** 1.85 mL/min

**Col. Temp.:** ambient

**Detection:** UV-Vis Abs.-Diode Array (PDA) @ 254 nm (ambient)

19990



### ANALYTES:

- 1** 4-Chlorophenol  
Retention Time: 1.637 min
- 2** 2,6-Dichlorophenol  
Retention Time: 2.14 min
- 3** 2,3-Dichlorophenol  
Retention Time: 3.099 min
- 4** 2,5-Dichlorophenol  
Retention Time: 3.32 min
- 5** 2,4-Dichlorophenol  
Retention Time: 3.68 min
- 6** 3,4-Dichlorophenol  
Retention Time: 4.31 min
- 7** 3,5-Dichlorophenol  
Retention Time: 5.622 min



Products used in this application:

