

Synthetic Cannabinoids (Parents) by GC-MS on a ZB-Drug-1

Column: Zebtron™ ZB-Drug-1, GC Cap. Column 10 m x 0.18 mm x 0.18 µm, Ea

Phase: Proprietary Drug Phase

Dimensions: 10 meters x 0.18 mm x 0.18 µm

Order No: 7CD-G023-08

Oven Profile: 200 to 320 °C @ 40 °C/min for 5 min

Carrier Gas: Constant Flow Helium, 1.2 mL/min

Injection: Split 10:1 1 µL @ 260°C

Detection: Mass Selective (MSD) (320°C)

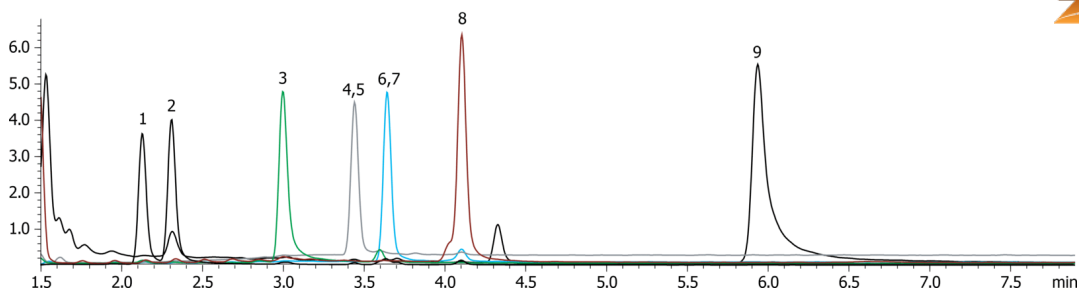
Analyst Note: SIM ions: CP47,497(215*,233,318); CP47,497(215*,233,332); HU-210(302,386,330);



Products used in this application:



19998



ANALYTES:

- 1 CP47,497
- 2 CP47,497-C8
- 3 HU-210
- 4 JWH-073-D7
- 5 JWH-018-Pentanoic acid metabolite
- 6 JWH-018-D9
- 7 JWH018
- 8 JWH-122
- 9 JWH-200

