

# HPLC Application

ID No.: 20000

## Water-soluble Vitamins on Kinetex 2.6u, C18, 150x4.6 by HPLC

**Column:** Kinetex<sup>®</sup> 2.6 µm C18 100 Å, LC Column 150 x 4.6 mm, Ea

**Dimensions:** 150 x 4.6 mm ID

**Order No:** 00F-4462-E0

**Elution Type:** Gradient

**Eluent A:** 3g Sodium 1-hexanesulfonate monohydrate/0.4mL Triethylamine/15mL Acetic acid in 198

**Eluent B:** Methanol

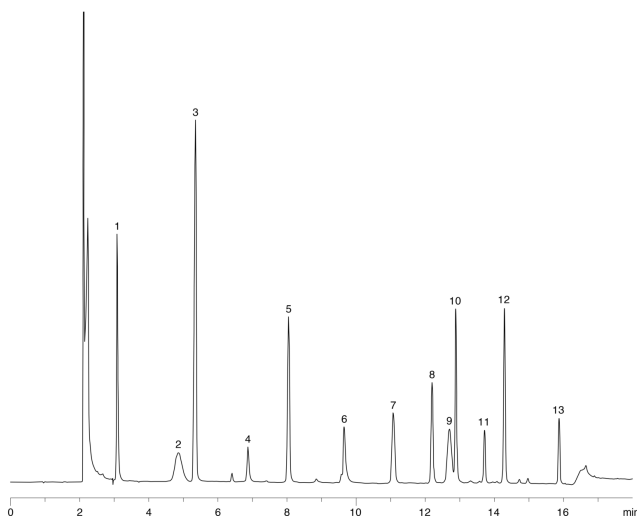
Gradient Profile:	Step No.	Time (min)	Pct A	Pct B
	1	0	95	5
	2	12	53	47
	3	12.1	2	98
	4	15	2	98
	5	15.1	95	5
	6	22	95	5

**Flow Rate:** 0.5 mL/min

**Col. Temp.:** 25 °C

**Detection:** UV-Vis Abs.-Variable Wave.(UV) @ 270 nm (ambient)

20000



Products used in this application:



## Water-soluble Vitamins on Kinetex 2.6u, C18, 150x4.6 by HPLC

### ANALYTES:

- 1** Ascorbic acid
- 2** Pyridoxal 5'-phosphate
- 3** Nicotinic acid
- 4** 4-Pyridoxic acid
- 5** Nicotinamide
- 6** Riboflavin 5'-phosphate
- 7** Pyridoxal
- 8** Pyridoxine
- 9** Cobalamine
- 10** Folic acid
- 11** Pyridoxamine
- 12** Riboflavin
- 13** Thiamine

