

## Malachite Green and Related Triphenylmethane Dyes in Aquaculture Samples by LC/MS/MS

**Column:** Synergi™ 4 µm Max-RP 80 Å, LC Column 50 x 2 mm, Ea  
**Dimensions:** 50 x 2 mm ID  
**Order No:** 00B-4337-B0  
**Elution Type:** Gradient  
**Eluent A:** 10mM Ammonium Acetate 0.1% formic acid  
**Eluent B:** Acetonitrile/Water (90:10) with 10mM Ammonium acetate and 0.1% Formic acid



Gradient Profile:	Step No.	Time (min)	Pct A	Pct B
	1	0	70	30
	2	8	10	90
	3	14	10	90
	4	15	70	30

**Flow Rate:** 0.4 mL/min

**Col. Temp.:** 30 °C

**Detection:** Tandem Mass Spec (MS-MS) @ (ambient)

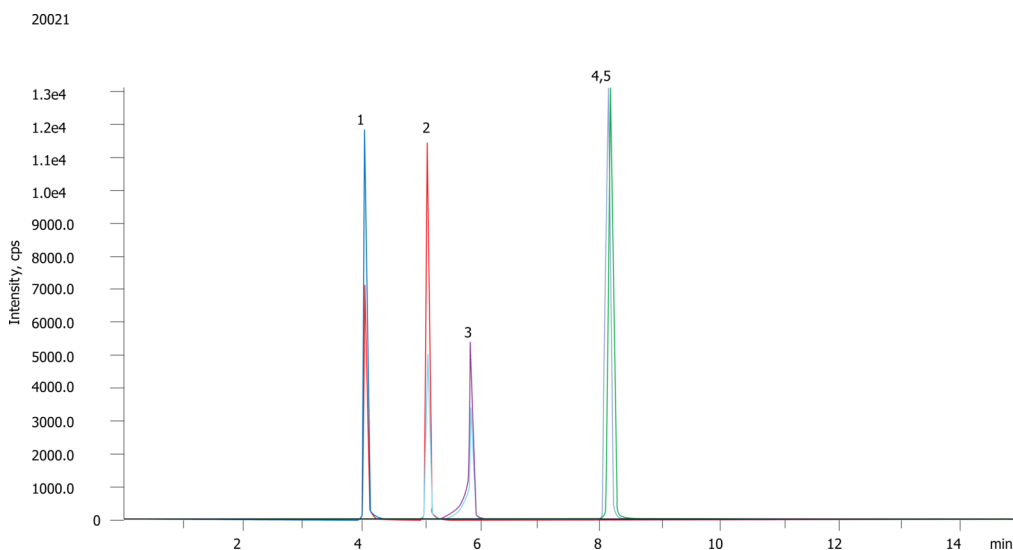
**Detector Info:** <a target="\_blank"

**Analyst Note:** href="https://sciex.com/products/mass-spectrometers?utm\_campaign=2019%20application%20search&utm\_source=phenomenex&utm\_medium=referral">SCIEX<br/>This separation uses IMethod Kit Part Number KH0-8986

SecurityGuard™ Guard Cartridge System extends column lifetime.

- SecurityGuard Cartridges, C12 4 x 2.0mm ID, 10/Pk Part No.: AJ0-6073

- Holder Part No.: KJ0-4282



### ANALYTES:

- 1** Malachite Green  
Retention Time: 4.1 min
- 2** Crystal Violet  
Retention Time: 5.1 min
- 3** Brilliant Green  
Retention Time: 5.8 min
- 4** Leucomalachite Green-d5  
Retention Time: 8.1 min
- 5** Leucomalachite Green  
Retention Time: 8.2 min

