

## Quantification of Carbamates Fungicides in Beverage by LC/MS/MS

**Column:** Gemini® 3 µm C18 110 Å, LC Column 50 x 2 mm, Ea

**Dimensions:** 50 x 2 mm ID

**Order No:** 00B-4439-B0

**Elution Type:** Gradient

**Eluent A:** 5mM ammonium formate

**Eluent B:** 5mM ammonium formate in acetonitrile

Gradient Profile:	Step No.	Time (min)	Pct A	Pct B
	1	0	85	15
	2	2.5	5	95
	3	4	5	95
	4	4.01	85	15
	5	8	85	15

**Flow Rate:** 0.5 mL/min

**Col. Temp.:** 28 °C

**Detection:** Tandem Mass Spec (MS-MS) @ (ambient)

**Detector Info:** 3200 QTRAP

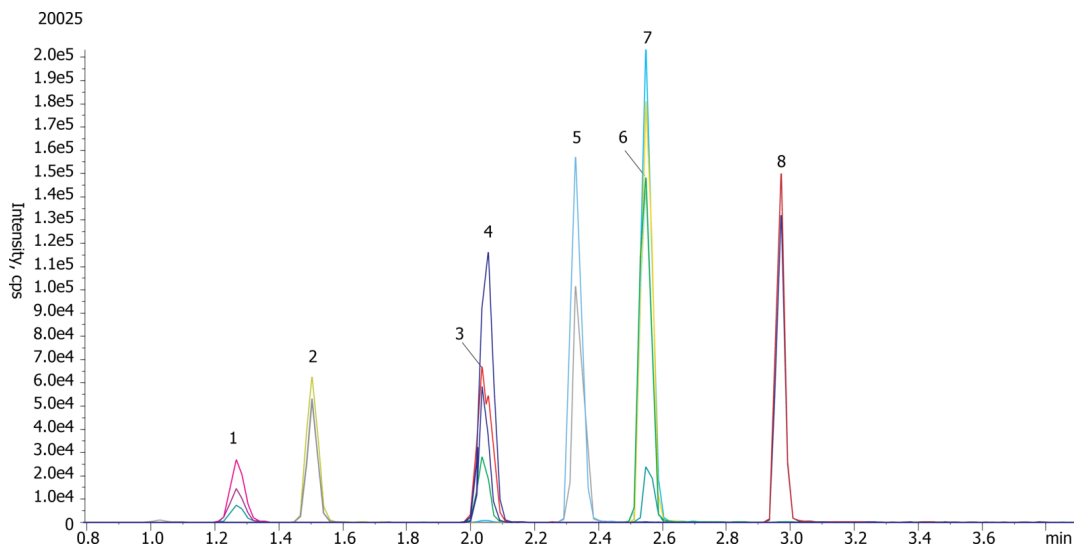
**Analyst Note:** SecurityGuard™ Guard Cartridge System extends column lifetime.

- SecurityGuard Cartridges, Gemini C18 4 x 2.0mm ID, 10/PK Part No.: AJ0-7596

- Holder Part No.: KJ0-4282



Products used in this application:



### ANALYTES:

- 1 Aldicarb-sulfone  
Retention Time: 1.27 min
- 2 Methomyl  
Retention Time: 1.5 min
- 3 3-Hydroxycarbofuran  
Retention Time: 2.04 min
- 4 Oxamyl  
Retention Time: 2.05 min
- 5 Aldicarb  
Retention Time: 2.33 min
- 6 Carbofuran  
Retention Time: 2.55 min
- 7 Carbofuran-d3  
Retention Time: 2.55 min
- 8 Methiocarb  
Retention Time: 2.97 min

©2025 Phenomenex Inc. All rights reserved.

For more information contact your Phenomenex Representative at support@phenomenex.com



Phenomenex products are available worldwide.

[www.phenomenex.com](http://www.phenomenex.com)

support@phenomenex.com

# Sample Preparation Details

for HPLC Application ID No.: 20025

## Quantification of Carbamates Fungicides in Beverage by LC/MS/MS

### PRODUCT DESCRIPTION:

Strata™-X 33 µm Polymeric Reversed Phase, 30 mg / 3 mL, Tubes , 50/Pk

Order No.: 8B-S100-TBJ

### SOLID PHASE EXTRACTION (SPE) PROCEDURE:

**Note:** The solvent volumes shown below are for a 30 mg bed mass.

The solvent volumes will need to be adjusted for a smaller or larger bed mass.

#### Condition:

---

#### Load:

---

Combine 400 µL apple juice with 1 mL 25 mM Ammonium acetate buffer (pH 5.5), vortex

#### Wash:

---

#### Dry:

---

2 min at 10mm Hg

#### Elute:

---

#### Final Prep and Analysis:

---

Inject: 10 µL on HPLC Tandem Mass Spec (MS-MS) @ (ambient)

<b>ANALYTES:</b>	<b>Spiked Conc. (ng/mL)</b>	<b>Log P</b>	<b>pKa</b>	<b>% Rec</b>	<b>%RSC (n=0)</b>
1 Aldicarb-sulfone	40			140.8	
2 Methomyl	40			107	
3 3-Hydroxycarbofuran	40			146.2	
4 Oxamyl	40			143.3	
5 Aldicarb	40			79.7	
6 Carbofuran	40			102	
7 Carbofuran-d3	40				
8 Methiocarb	40			75.8	

**Note:** This method is designed as a convenient starting point for further investigation and can be tailored to meet your extraction goals. Call your local Phenomenex Representative for assistance in method development and optimization techniques.

©2025 Phenomenex Inc. All rights reserved.

For more information contact your Phenomenex Representative at support@phenomenex.com



Phenomenex products are available worldwide.

[www.phenomenex.com](http://www.phenomenex.com)

[support@phenomenex.com](mailto:support@phenomenex.com)