

## Sulfonamides in Meat by LC/MS/MS

**Column:** Gemini® 3 µm C18 110 Å, LC Column 50 x 4.6 mm, Ea

**Dimensions:** 50 x 4.6 mm ID

**Order No:** 00B-4439-E0

**Elution Type:** Gradient

**Eluent A:** 0.1% Formic Acid in Water

**Eluent B:** Acetonitrile

Gradient Profile:	Step No.	Time (min)	Pct A	Pct B
	1	0	98	2
	2	2	98	2
	3	2.1	85	15
	4	6.5	50	50
	5	7.1	0	100
	6	8	0	100
	7	8.1	98	2
	8	10	98	2



Products used in this application:



**Flow Rate:** 800 µL/min

**Col. Temp.:** ambient

**Detection:** Tandem Mass Spec (MS-MS) @ (300 °C)

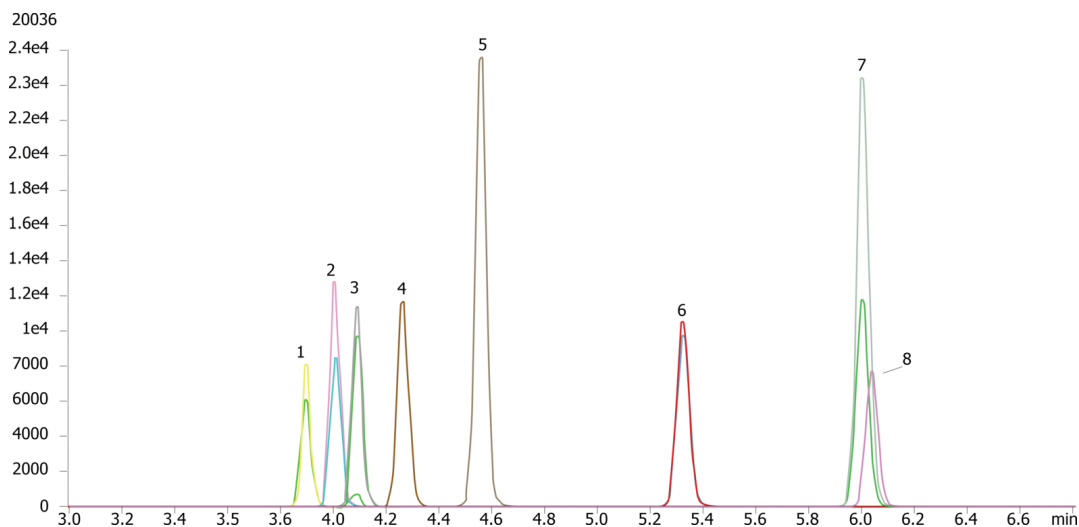
**Detector Info:** <a target="\_blank"

href="https://sciex.com/products/mass-spectrometers?utm\_campaign=2019%20application%20search&utm\_source=phenomenex&utm\_medium=referral">SCIEX<

**Analyst Note:** SecurityGuard™ Guard Cartridge System extends column lifetime.

- SecurityGuard Cartridges, Gemini C18 4 x 3.0mm ID, 10/PK Part No.: AJ0-7597

- Holder Part No.: KJ0-4282



### ANALYTES:

- 1 Sulfadiazine
- 2 Sulfathiazole
- 3 Sulfapyridine
- 4 Sulfamerazine
- 5 Sulfamethazine
- 6 Sulfamethoxazole
- 7 Sulfadimethoxine
- 8 Sulfaquinoxaline



# Sample Preparation Details

for HPLC Application ID No.: 20036

## Sulfonamides in Meat by LC/MS/MS

### PRODUCT DESCRIPTION:

Strata™-X 33 µm Polymeric Reversed Phase, 60 mg / 3 mL, Tubes , 50/Pk

Order No.: 8B-S100-UBJ

### SOLID PHASE EXTRACTION (SPE) PROCEDURE:

**Note:** The solvent volumes shown below are for a 60 mg bed mass.

The solvent volumes will need to be adjusted for a smaller or larger bed mass.

#### Condition:

---

#### Load:

---

#### Wash:

---

#### Dry:

---

2min at 10inches Hg

#### Elute:

---

#### Final Prep and Analysis:

---

Inject: 50 µL on HPLC Tandem Mass Spec (MS-MS) @ (300°C)

<b>ANALYTES:</b>	<b>Spiked Conc. (ng/mL)</b>	<b>Log P</b>	<b>pKa</b>	<b>% Rec</b>	<b>%RSC (n=0)</b>
1 Sulfadiazine	0				
2 Sulfathiazole	0				
3 Sulfapyridine	0				
4 Sulfamerazine	0				
5 Sulfamethazine	0				
6 Sulfamethoxazole	0				
7 Sulfadimethoxine	0				
8 Sulfaquinoxaline	0				

**Note:** This method is designed as a convenient starting point for further investigation and can be tailored to meet your extraction goals. Call your local Phenomenex Representative for assistance in method development and optimization techniques.

©2024 Phenomenex Inc. All rights reserved.

For more information contact your Phenomenex Representative at support@phenomenex.com



Phenomenex products are available worldwide.

[www.phenomenex.com](http://www.phenomenex.com)

[support@phenomenex.com](mailto:support@phenomenex.com)