

# HPLC Application

ID No.: 20072

## Isoproterenol on Lux 5µm Cellulose-2 in RP

**Column:** Lux<sup>®</sup> 5 µm Cellulose-2, LC Column 250 x 4.6 mm, Ea

**Dimensions:** 250 x 4.6 mm ID

**Order No:** 00G-4457-E0

**Elution Type:** Isocratic

**Eluent A:** MeOH / 20mM NH<sub>4</sub>HCO<sub>3</sub> (80:20) DEA (0.1%)

| Gradient        | Step No. | Time (min) | Pct A |
|-----------------|----------|------------|-------|
| <b>Profile:</b> | <b>1</b> | 0          | 100   |

**Flow Rate:** 1 mL/min

**Col. Temp.:** ambient

**Detection:** UV-Vis Abs.-Variable Wave.(UV) @ 220 nm (ambient)

**Analyst Note:** SecurityGuard<sup>™</sup> Guard Cartridge System extends column lifetime.

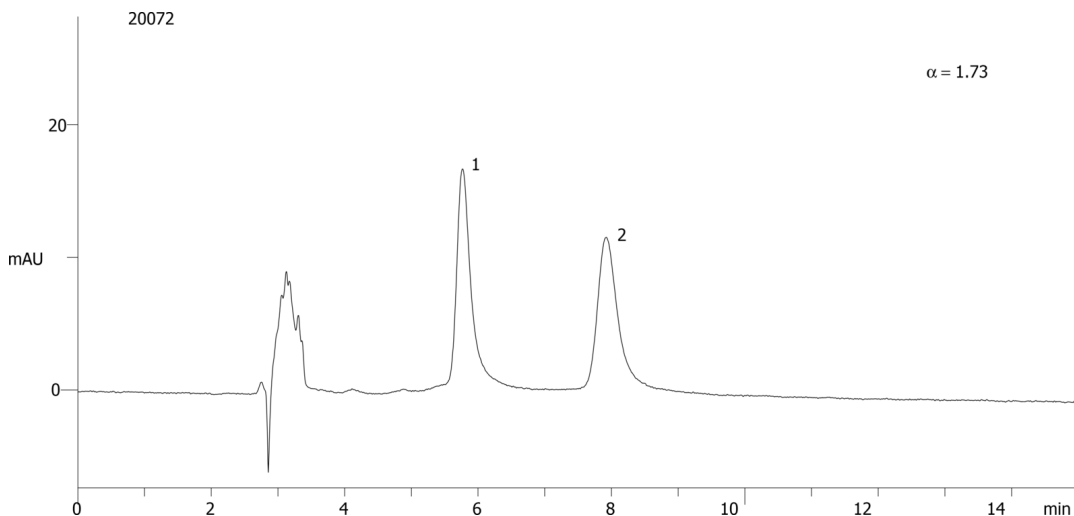
- SecurityGuard Cartridges, Lux Cellulose-2, 4 x 3.0mm ID, 10/Pk Part No.: AJ0-8366

- Holder Part No.: KJ0-4282

20072



Products used in this application:



### ANALYTES:

- 1** Isoproterenol  
Retention Time: 5.7 min
- 2** Isoproterenol  
Retention Time: 7.9 min

