

## 1-(9-Anthryl)-2,2,2-Trifluoroethanol on Lux 5µm Cellulose-1 in RP

**Column:** Lux® 5 µm Cellulose-1, LC Column 250 x 4.6 mm, Ea

**Dimensions:** 250 x 4.6 mm ID

**Order No:** 00G-4459-E0

**Elution Type:** Isocratic

**Eluent A:** MeOH / 20mM NH<sub>4</sub>HCO<sub>3</sub> (95:5) DEA (0.1%)

Gradient	Step No.	Time (min)	Pct A
<b>Profile:</b>	<b>1</b>	0	100

**Flow Rate:** 1 mL/min

**Col. Temp.:** ambient

**Detection:** UV-Vis Abs.-Variable Wave.(UV) @ 220 nm (ambient)

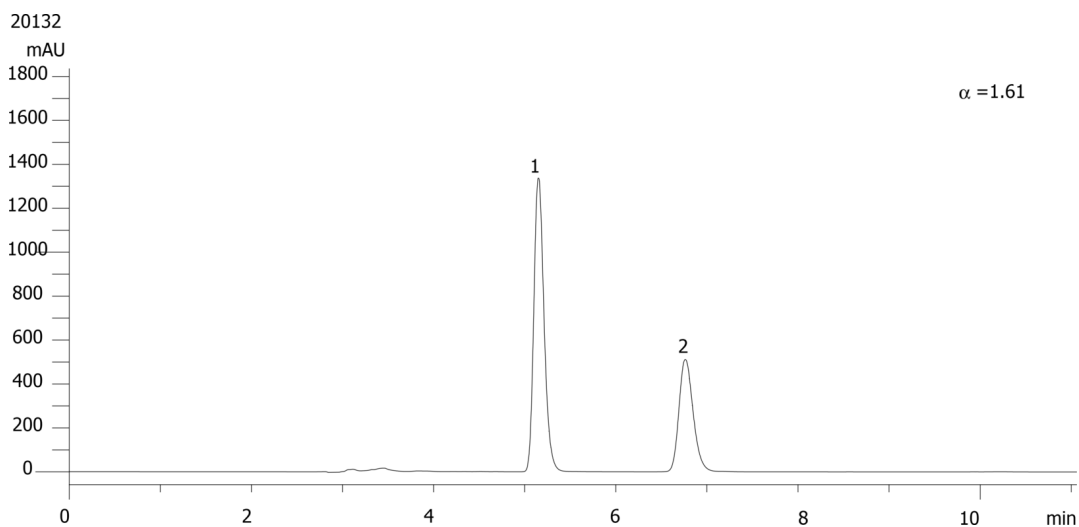
**Analyst Note:** SecurityGuard™ Guard Cartridge System extends column lifetime.

- SecurityGuard Cartridges, Lux Cellulose-1, 4 x 3.0mm ID, 10/Pk Part No.: AJ0-8403

- Holder Part No.: KJ0-4282



Products used in this application:



### ANALYTES:

**1** 1-(9-Anthryl)-2,2,2-Trifluoroethanol

Retention Time: 5.15 min

**2** 1-(9-Anthryl)-2,2,2-Trifluoroethanol

Retention Time: 6.76 min

