

# HPLC Application

ID No.: 20141

## Flumequine on Lux 5 $\mu$ m Cellulose-2 in RP

**Column:** Lux<sup>®</sup> 5  $\mu$ m Cellulose-2, LC Column 250 x 4.6 mm, Ea  
**Dimensions:** 250 x 4.6 mm ID  
**Order No:** 00G-4457-E0  
**Elution Type:** Isocratic  
**Eluent A:** ACN / 20mM NH<sub>4</sub>HCO<sub>3</sub> (60:40) with DEA (0.1%) in buffer  
**Gradient**

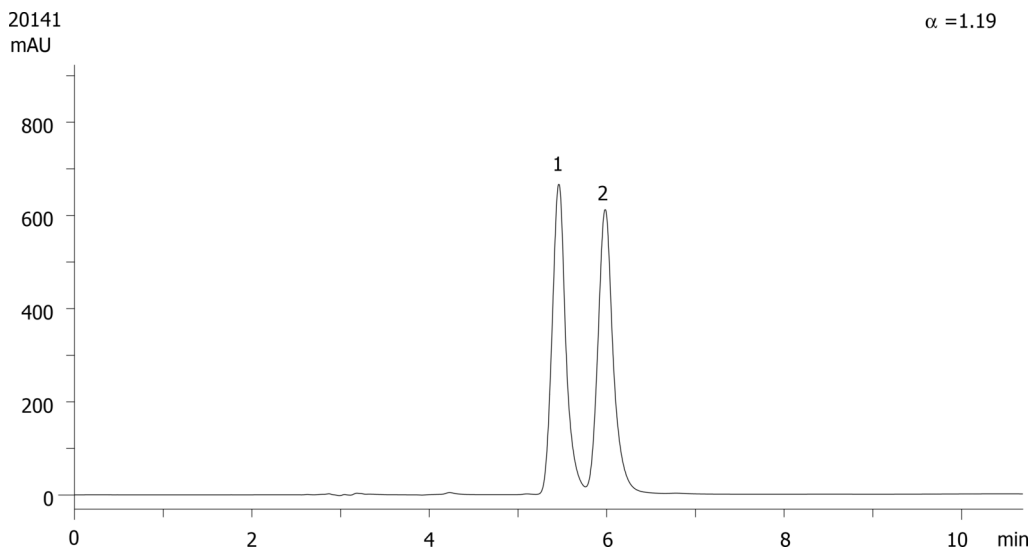
Step No.	Time (min)	Pct A
1	0	100

**Profile:**  
**Flow Rate:** 1 mL/min  
**Col. Temp.:** ambient  
**Detection:** UV-Vis Abs.-Variable Wave.(UV) @ 220 nm (ambient)  
**Analyst Note:** SecurityGuard<sup>™</sup> Guard Cartridge System extends column lifetime.

- SecurityGuard Cartridges, Lux Cellulose-2, 4 x 3.0mm ID, 10/Pk Part No.: AJ0-8366
- Holder Part No.: KJ0-4282



Products used in this application:



### ANALYTES:

- 1 Flumequine  
Retention Time: 5.46 min
- 2 Flumequine  
Retention Time: 5.98 min

