

HPLC Application

ID No.: 20149

Thalidomide on Lux 5 μ m Cellulose-4 in RP

Column: Lux[®] 5 μ m Cellulose-4, LC Column 250 x 4.6 mm, Ea
Dimensions: 250 x 4.6 mm ID
Order No.: 00G-4491-E0
Elution Type: Isocratic
Eluent A: MeOH / 20mM NH₄HCO₃ (90:10) with DEA (0.1%) in buffer

Gradient	Step No.	Time (min)	Pct A
Profile:	1	0	100

Flow Rate: 1 mL/min

Col. Temp.: ambient

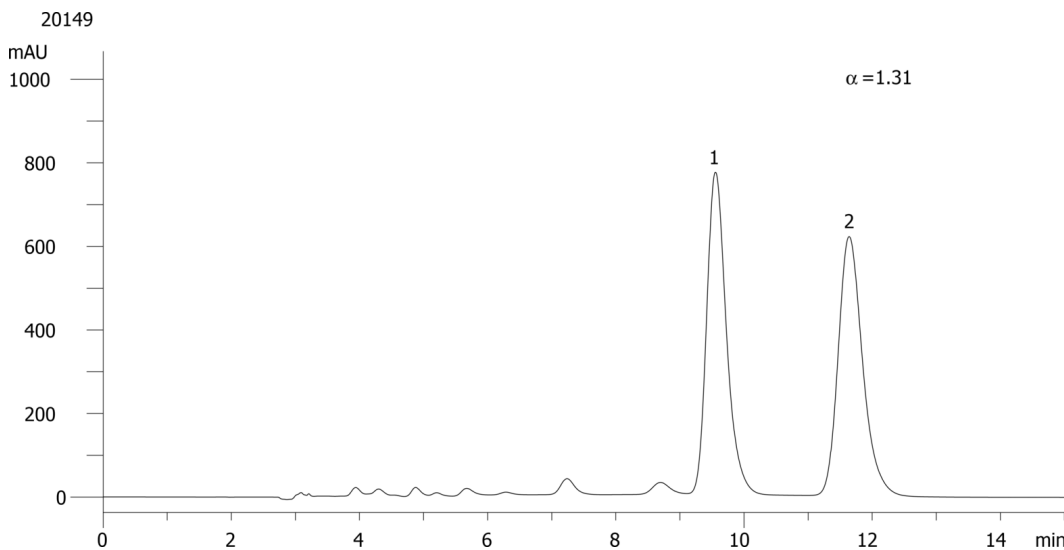
Detection: UV-Vis Abs.-Variable Wave.(UV) @ 220 nm (ambient)

Analyst Note: SecurityGuard[™] Guard Cartridge System extends column lifetime.

- SecurityGuard Cartridges, Lux Cellulose-4 4 x 3.0 mm, 10/Pk Part No.: AJ0-8627
- Holder Part No.: KJ0-4282



Products used in this application:



ANALYTES:

- 1** Thalidomide
Retention Time: 9.55 min
- 2** Thalidomide
Retention Time: 11.64 min

