

HPLC Application

ID No.: 20182

Lansoprazole on Lux 5µm Cellulose-4 in RP

Column: Lux® 5 µm Cellulose-4, LC Column 250 x 4.6 mm, Ea
Dimensions: 250 x 4.6 mm ID
Order No: 00G-4491-E0
Elution Type: Isocratic
Eluent A: ACN / 20mM NH₄HCO₃ (70:30) with DEA (0.1%) in buffer
Gradient

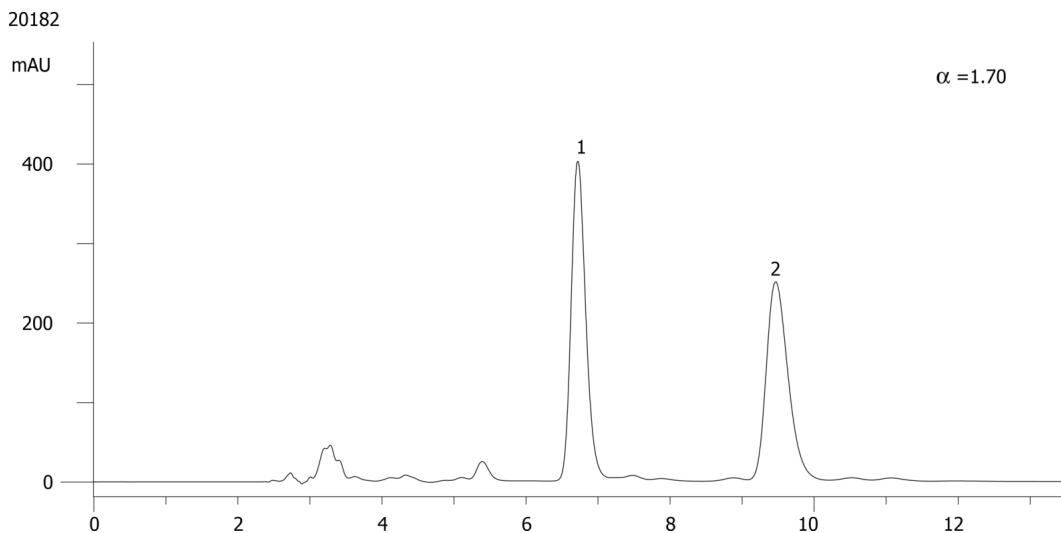
Step No.	Time (min)	Pct A
1	0	100

Profile:
Flow Rate: 1 mL/min
Col. Temp.: ambient
Detection: UV-Vis Abs.-Variable Wave.(UV) @ 220 nm (ambient)
Analyst Note: SecurityGuard™ Guard Cartridge System extends column lifetime.

- SecurityGuard Cartridges, Lux Cellulose-4 4 x 3.0 mm, 10/Pk Part No.: AJ0-8627
- Holder Part No.: KJ0-4282



Products used in this application:



ANALYTES:

- 1** Lansoprazole
Retention Time: 6.77 min
- 2** Lansoprazole
Retention Time: 9.51 min

