

HPLC Application

ID No.: 20202

1,1-Dihydroxy-6,6-Dimethylbipheyl on Lux 5µm Cellulose-1 in RP

Column: Lux[®] 5 µm Cellulose-1, LC Column 250 x 4.6 mm, Ea
Dimensions: 250 x 4.6 mm ID
Order No: 00G-4459-E0
Elution Type: Isocratic
Eluent A: ACN / 20mM NH₄HCO₃+0.1%DEA (50:50) with None in buffer
Gradient

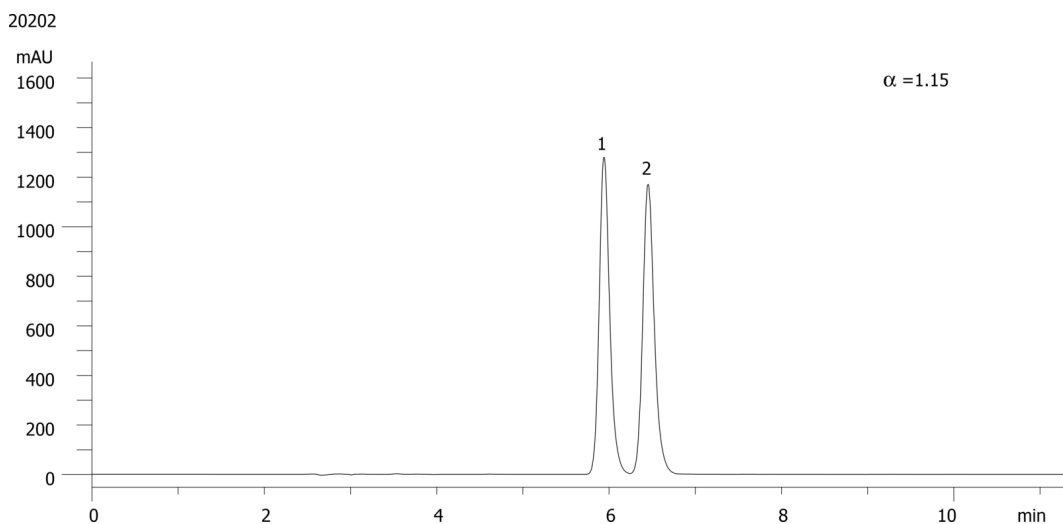
Step No.	Time (min)	Pct A
1	0	100

Profile:
Flow Rate: 1 mL/min
Col. Temp.: ambient
Detection: UV-Vis Abs.-Variable Wave.(UV) @ 220 nm (ambient)
Analyst Note: SecurityGuard[™] Guard Cartridge System extends column lifetime.

- SecurityGuard Cartridges, Lux Cellulose-1, 4 x 3.0mm ID, 10/Pk Part No.: AJ0-8403
- Holder Part No.: KJ0-4282



Products used in this application:



ANALYTES:

- 1** 1,1-Dihydroxy-6,6-Dimethylbipheyl
Retention Time: 5.94 min
- 2** 1,1-Dihydroxy-6,6-Dimethylbipheyl
Retention Time: 6.45 min

