

HPLC Application

ID No.: 20216

Fluoxetine on Lux 5 μ m Cellulose-1 in RP

Column: Lux[®] 5 μ m Cellulose-1, LC Column 250 x 4.6 mm, Ea

Dimensions: 250 x 4.6 mm ID

Order No: 00G-4459-E0

Elution Type: Isocratic

Eluent A: MeOH / 20mM NH₄HCO₃+0.1%DEA (90:10) None

Gradient	Step No.	Time (min)	Pct A
Profile:	1	0	100

Flow Rate: 1 mL/min

Col. Temp.: ambient

Detection: UV-Vis Abs.-Variable Wave.(UV) @ 220 nm (ambient)

Analyst Note: SecurityGuard[™] Guard Cartridge System extends column lifetime.

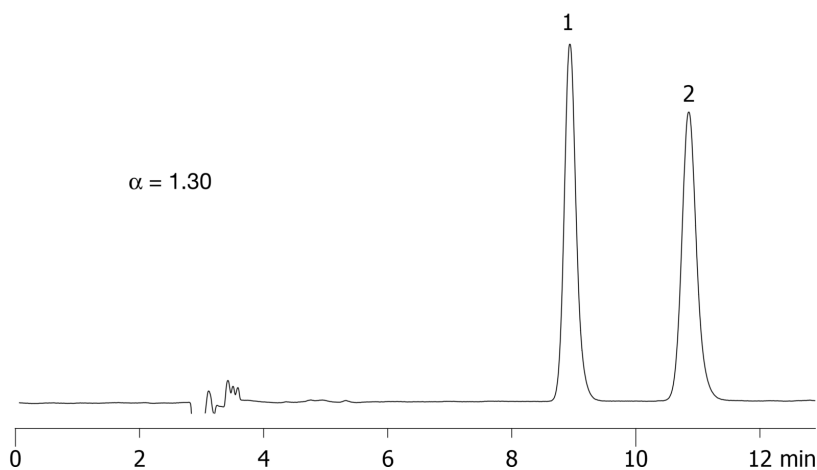
- SecurityGuard Cartridges, Lux Cellulose-1, 4 x 3.0mm ID, 10/Pk Part No.: AJ0-8403

- Holder Part No.: KJ0-4282

20216



Products used in this application:



ANALYTES:

1 Fluoxetine

Retention Time: 8.94 min

2 Fluoxetine

Retention Time: 10.85 min

