

HPLC Application

ID No.: 20247

Napropamide on Lux 5µm Cellulose-2 in RP

Column: Lux[®] 5 µm Cellulose-2, LC Column 250 x 4.6 mm, Ea
Dimensions: 250 x 4.6 mm ID
Order No: 00G-4457-E0
Elution Type: Isocratic
Eluent A: ACN / 20mM NH₄HCO₃+0.1%DEA (50:50) with None in buffer
Gradient

| Step No. | Time (min) | Pct A |
|----------|------------|-------|
| 1 | 0 | 100 |

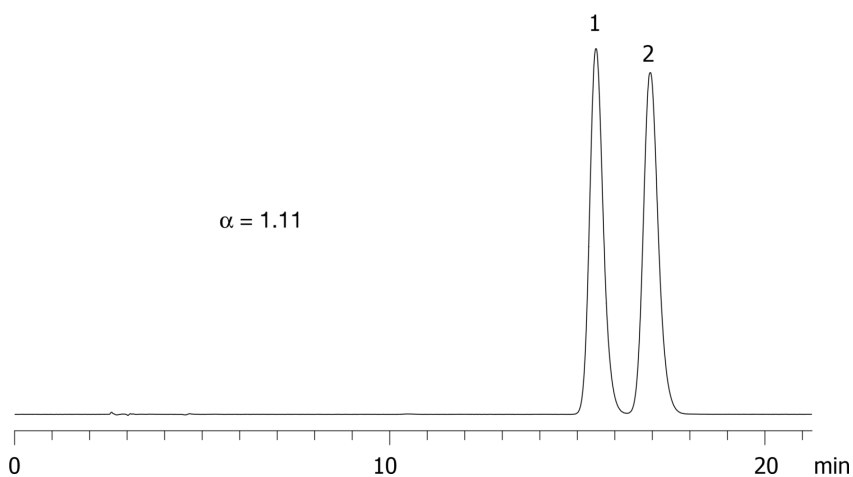
Profile:
Flow Rate: 1 mL/min
Col. Temp.: ambient
Detection: UV-Vis Abs.-Variable Wave.(UV) @ 220 nm (ambient)
Analyst Note: SecurityGuard[™] Guard Cartridge System extends column lifetime.

- SecurityGuard Cartridges, Lux Cellulose-2, 4 x 3.0mm ID, 10/Pk Part No.: AJ0-8366
- Holder Part No.: KJ0-4282

20247



Products used in this application:



ANALYTES:

- 1 Napropamide
Retention Time: 15.5 min
- 2 Napropamide
Retention Time: 16.94 min