

HPLC Application

ID No.: 20302

1,1-Dihydroxy-6,6-Dimethylbipheyl on Lux 5µm Cellulose-3 in RP

Column: Lux[®] 5 µm Cellulose-3, LC Column 250 x 4.6 mm, Ea

Dimensions: 250 x 4.6 mm ID

Order No: 00G-4493-E0

Elution Type: Isocratic

Eluent A: ACN / 20mM NH₄HCO₃+0.1%DEA (40:60) None

Gradient	Step No.	Time (min)	Pct A
Profile:	1	0	100

Flow Rate: 1 mL/min

Col. Temp.: ambient

Detection: UV-Vis Abs.-Variable Wave.(UV) @ 220 nm (ambient)

Analyst Note: SecurityGuard[™] Guard Cartridge System extends column lifetime.

- SecurityGuard Cartridges, Lux Cellulose-3 4 x 3.0 mm, 10/Pk Part No.: AJ0-8622

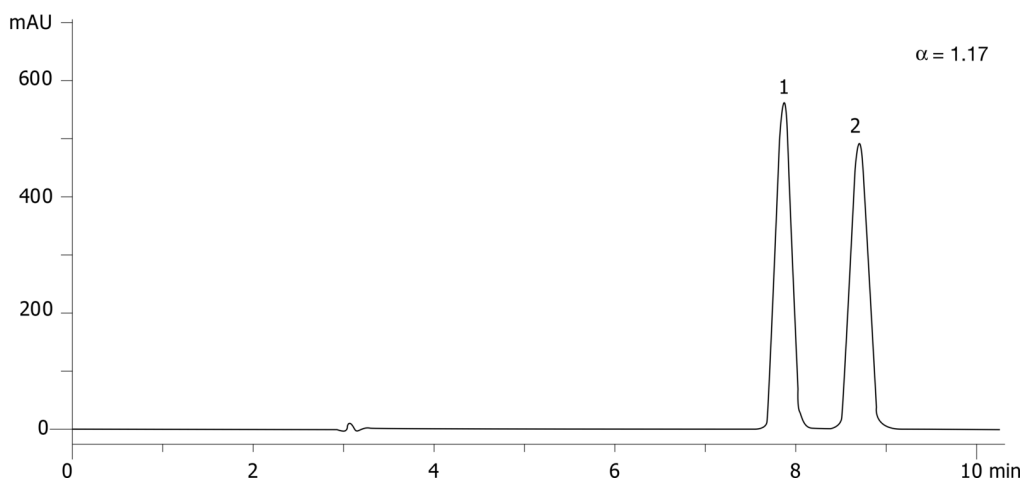
- Holder Part No.: KJ0-4282



Products used in this application:



20302



ANALYTES:

1 1,1-Dihydroxy-6,6-Dimethylbipheyl

Retention Time: 7.87 min

2 1,1-Dihydroxy-6,6-Dimethylbipheyl

Retention Time: 8.7 min

