

HPLC Application

ID No.: 20305

Benfluorex on Lux 5 μ m Cellulose-3 in RP

Column: Lux[®] 5 μ m Cellulose-3, LC Column 250 x 4.6 mm, Ea
Dimensions: 250 x 4.6 mm ID
Order No: 00G-4493-E0
Elution Type: Isocratic
Eluent A: MeOH / 20mM NH₄HCO₃+0.1%DEA (80:20) with None in buffer
Gradient

Step No.	Time (min)	Pct A
1	0	100

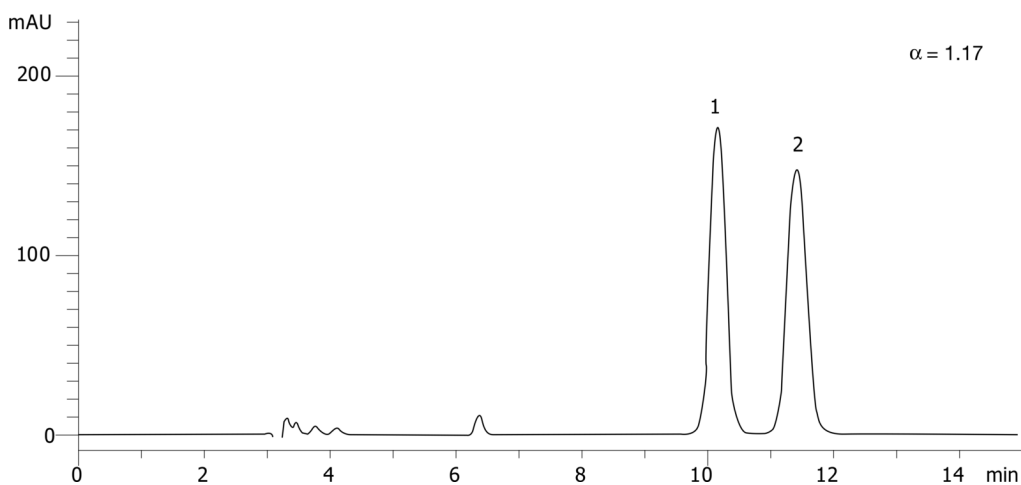
Profile:
Flow Rate: 1 mL/min
Col. Temp.: ambient
Detection: UV-Vis Abs.-Variable Wave.(UV) @ 220 nm (ambient)
Analyst Note: SecurityGuard[™] Guard Cartridge System extends column lifetime.



Products used in this application:



20305



ANALYTES:

- 1 Benfluorex
Retention Time: 10.16 min
- 2 Benfluorex
Retention Time: 11.41 min

