

# HPLC Application

ID No.: 20317

## 1-(1-Naphthyl)ethylamine on Lux 5 $\mu$ m Cellulose-3 in RP

**Column:** Lux<sup>®</sup> 5  $\mu$ m Cellulose-3, LC Column 250 x 4.6 mm, Ea  
**Dimensions:** 250 x 4.6 mm ID  
**Order No:** 00G-4493-E0  
**Elution Type:** Isocratic  
**Eluent A:** MeOH / 20mM NH<sub>4</sub>HCO<sub>3</sub>+0.1%DEA (80:20) with None in buffer

Gradient	Step No.	Time (min)	Pct A
<b>Profile:</b>	<b>1</b>	0	100

**Flow Rate:** 1 mL/min

**Col. Temp.:** ambient

**Detection:** UV-Vis Abs.-Variable Wave.(UV) @ 220 nm (ambient)

**Analyst Note:** SecurityGuard<sup>™</sup> Guard Cartridge System extends column lifetime.

- SecurityGuard Cartridges, Lux Cellulose-3 4 x 3.0 mm, 10/Pk Part No.: AJ0-8622

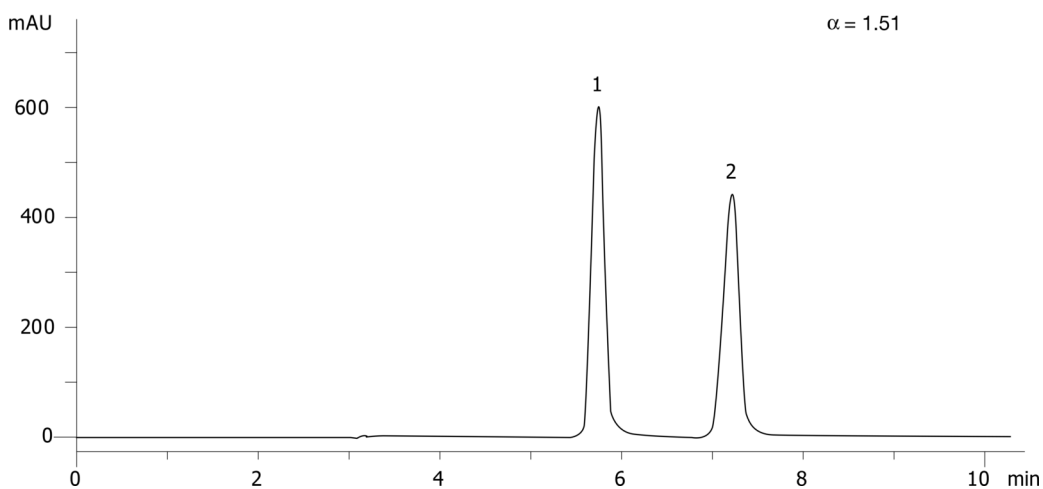
- Holder Part No.: KJ0-4282



Products used in this application:



20317



### ANALYTES:

**1** 1-(1-Naphthyl)ethylamine

Retention Time: 5.75 min

**2** 1-(1-Naphthyl)ethylamine

Retention Time: 7.21 min

