

HPLC Application

ID No.: 20321

Cyclophosphamide hydrate on Lux 5 μ m Cellulose-3 in RP

Column: Lux[®] 5 μ m Cellulose-3, LC Column 250 x 4.6 mm, Ea
Dimensions: 250 x 4.6 mm ID
Order No: 00G-4493-E0
Elution Type: Isocratic
Eluent A: ACN / 20mM NH₄HCO₃+0.1%DEA (40:60) with None in buffer
Gradient

Step No.	Time (min)	Pct A
1	0	100

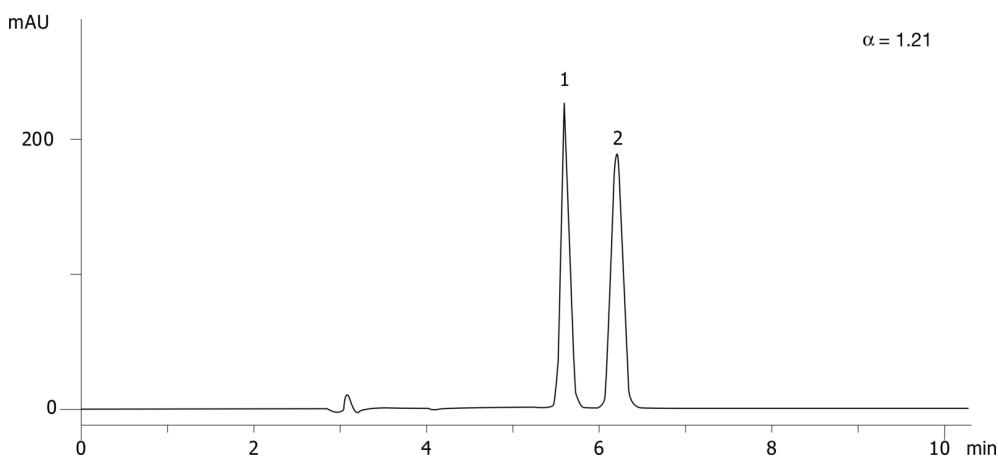
Profile:
Flow Rate: 1 mL/min
Col. Temp.: ambient
Detection: UV-Vis Abs.-Variable Wave.(UV) @ 220 nm (ambient)
Analyst Note: SecurityGuard[™] Guard Cartridge System extends column lifetime.

- SecurityGuard Cartridges, Lux Cellulose-3 4 x 3.0 mm, 10/Pk Part No.: AJ0-8622
- Holder Part No.: KJ0-4282

20321



Products used in this application:



ANALYTES:

- 1 Cyclophosphamide hydrate
Retention Time: 5.61 min
- 2 Cyclophosphamide hydrate
Retention Time: 6.2 min

