

HPLC Application

ID No.: 20339

1-(9-Anthryl)-2,2,2-Trifluoroethanol on Lux 5 μ m Cellulose-4 in NP

Column: Lux[®] 5 μ m Cellulose-4, LC Column 250 x 4.6 mm, Ea

Dimensions: 250 x 4.6 mm ID

Order No: 00G-4491-E0

Elution Type: Isocratic

Eluent A: Hexane / IPA (90:10) DEA (0.1%)

Gradient	Step No.	Time (min)	Pct A
Profile:	1	0	100

Flow Rate: 1 mL/min

Col. Temp.: ambient

Detection: UV-Vis Abs.-Variable Wave.(UV) @ 220 nm (ambient)

Analyst Note: SecurityGuard[™] Guard Cartridge System extends column lifetime.

- SecurityGuard Cartridges, Lux Cellulose-4 4 x 3.0 mm, 10/Pk Part No.: AJ0-8627

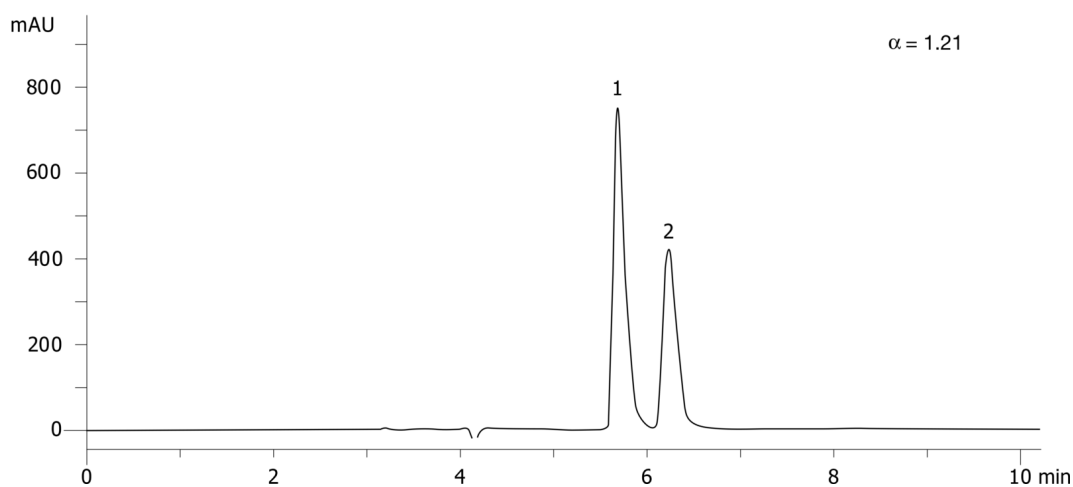
- Holder Part No.: KJ0-4282



Products used in this application:



20339



ANALYTES:

1 1-(9-Anthryl)-2,2,2-Trifluoroethanol

Retention Time: 5.69 min

2 1-(9-Anthryl)-2,2,2-Trifluoroethanol

Retention Time: 6.23 min

