

HPLC Application

ID No.: 20341

Indapamide on Lux 5 μ m Cellulose-4 in NP

Column: Lux[®] 5 μ m Cellulose-4, LC Column 250 x 4.6 mm, Ea

Dimensions: 250 x 4.6 mm ID

Order No: 00G-4491-E0

Elution Type: Isocratic

Eluent A: Hexane / IPA (80:20) DEA (0.1%)

Gradient	Step No.	Time (min)	Pct A
Profile:	1	0	100

Flow Rate: 1 mL/min

Col. Temp.: ambient

Detection: UV-Vis Abs.-Variable Wave.(UV) @ 220 nm (ambient)

Analyst Note: SecurityGuard[™] Guard Cartridge System extends column lifetime.

- SecurityGuard Cartridges, Lux Cellulose-4 4 x 3.0 mm, 10/Pk Part No.: AJ0-8627

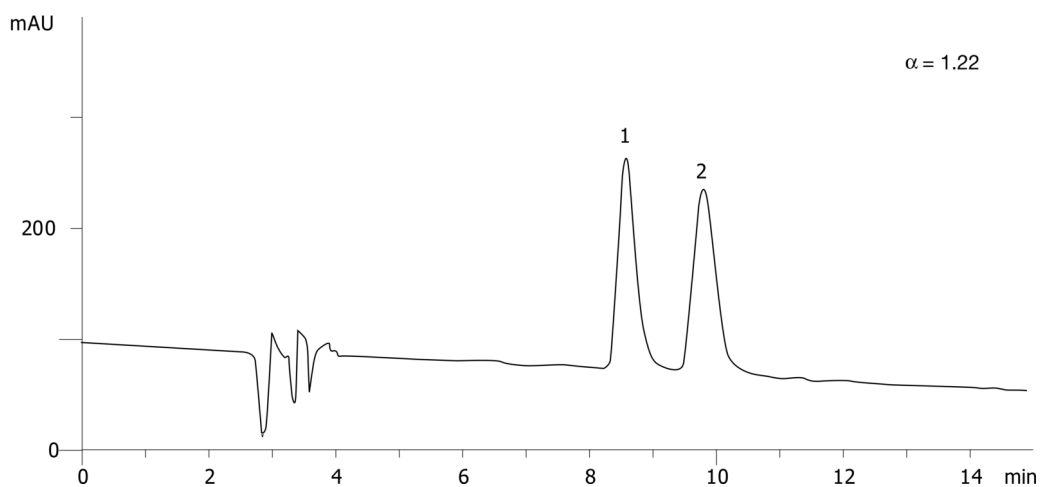
- Holder Part No.: KJ0-4282



Products used in this application:



20341



ANALYTES:

- 1** Indapamide
Retention Time: 8.58 min
- 2** Indapamide
Retention Time: 9.8 min

