

HPLC Application

ID No.: 20360

Warfarin on Lux 5µm Cellulose-3 in PO

Column: Lux[®] 5 µm Cellulose-3, LC Column 250 x 4.6 mm, Ea

Dimensions: 250 x 4.6 mm ID

Order No: 00G-4493-E0

Elution Type: Isocratic

Eluent A: MeOH / IPA (90:10) Formic acid (0.1%)

Gradient	Step No.	Time (min)	Pct A
Profile:	1	0	100

Flow Rate: 1 mL/min

Col. Temp.: ambient

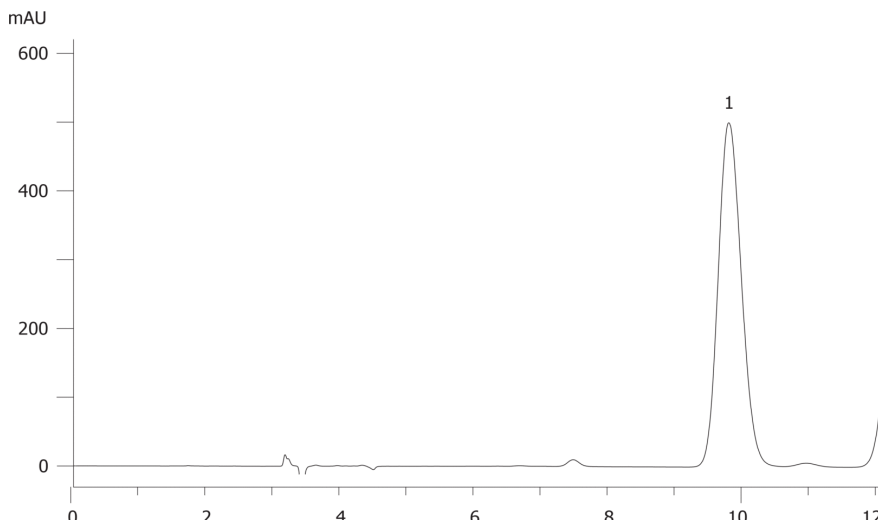
Detection: UV-Vis Abs.-Variable Wave.(UV) @ 220 nm (ambient)

Analyst Note: SecurityGuard[™] Guard Cartridge System extends column lifetime.

- SecurityGuard Cartridges, Lux Cellulose-3 4 x 3.0 mm, 10/Pk Part No.: AJ0-8622

- Holder Part No.: KJ0-4282

20360



ANALYTES:

1 Warfarin

Retention Time: 9.8 min

2 Warfarin

Retention Time: 12.35 min



Products used in this application:

