

# HPLC Application

ID No.: 20391

## Esmolol on Lux 5µm Cellulose-3 in NP

**Column:** Lux<sup>®</sup> 5 µm Cellulose-3, LC Column 250 x 4.6 mm, Ea

**Dimensions:** 250 x 4.6 mm ID

**Order No:** 00G-4493-E0

**Elution Type:** Isocratic

**Eluent A:** Hexane / EtOH (90:10) DEA (0.1%)

Gradient	Step No.	Time (min)	Pct A
<b>Profile:</b>	<b>1</b>	0	100

**Flow Rate:** 1 mL/min

**Col. Temp.:** ambient

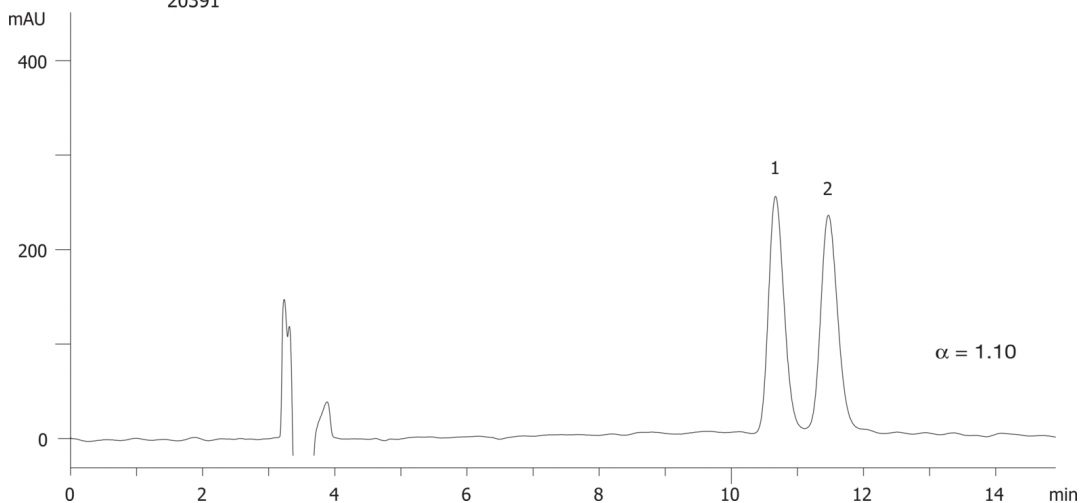
**Detection:** UV-Vis Abs.-Variable Wave.(UV) @ 220 nm (ambient)

**Analyst Note:** SecurityGuard<sup>™</sup> Guard Cartridge System extends column lifetime.

- SecurityGuard Cartridges, Lux Cellulose-3 4 x 3.0 mm, 10/Pk Part No.: AJ0-8622

- Holder Part No.: KJ0-4282

20391



### ANALYTES:

**1** Esmolol

Retention Time: 10.67 min

**2** Esmolol

Retention Time: 11.47 min



Products used in this application:

