

HPLC Application

ID No.: 20503

Citalopram on Lux 5 μ m Cellulose-2 in NP

Column: Lux[®] 5 μ m Cellulose-2, LC Column 250 x 4.6 mm, Ea

Dimensions: 250 x 4.6 mm ID

Order No: 00G-4457-E0

Elution Type: Isocratic

Eluent A: Hexane / EtOH (90:10) DEA (0.1%)

Gradient	Step No.	Time (min)	Pct A
Profile:	1	0	100

Flow Rate: 1 mL/min

Col. Temp.: ambient

Detection: UV-Vis Abs.-Variable Wave.(UV) @ 220 nm (ambient)

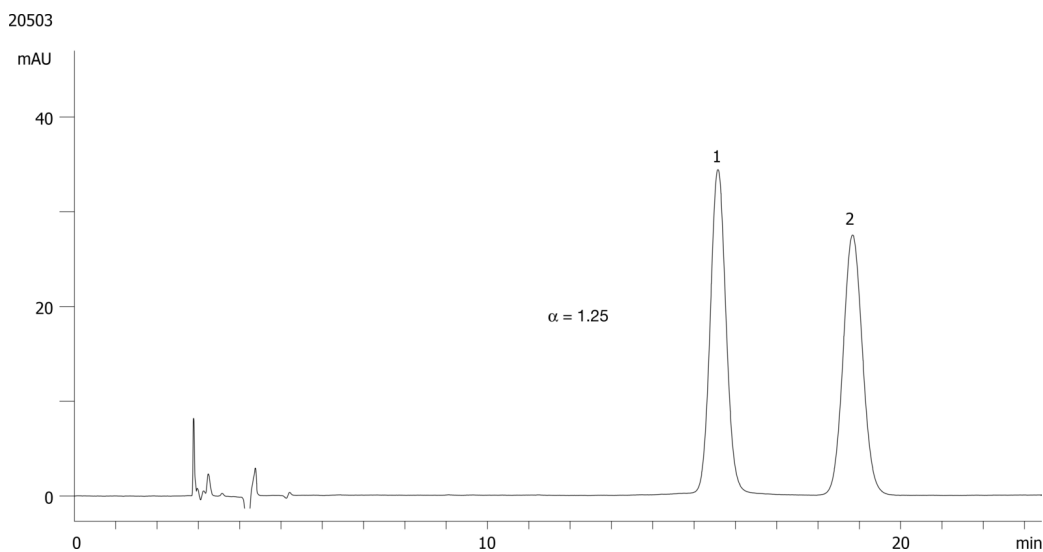
Analyst Note: SecurityGuard[™] Guard Cartridge System extends column lifetime.

- SecurityGuard Cartridges, Lux Cellulose-2, 4 x 3.0mm ID, 10/Pk Part No.: AJ0-8366

- Holder Part No.: KJ0-4282



Products used in this application:



ANALYTES:

1 Citalopram

Retention Time: 15.57 min

2 Citalopram

Retention Time: 18.83 min

